

APP CRS <b>334°</b>	Rwy Idg <b>4000</b>
	TDZE <b>928</b>
	Apt Elev <b>928</b>

# RNAV (GPS) RWY 33

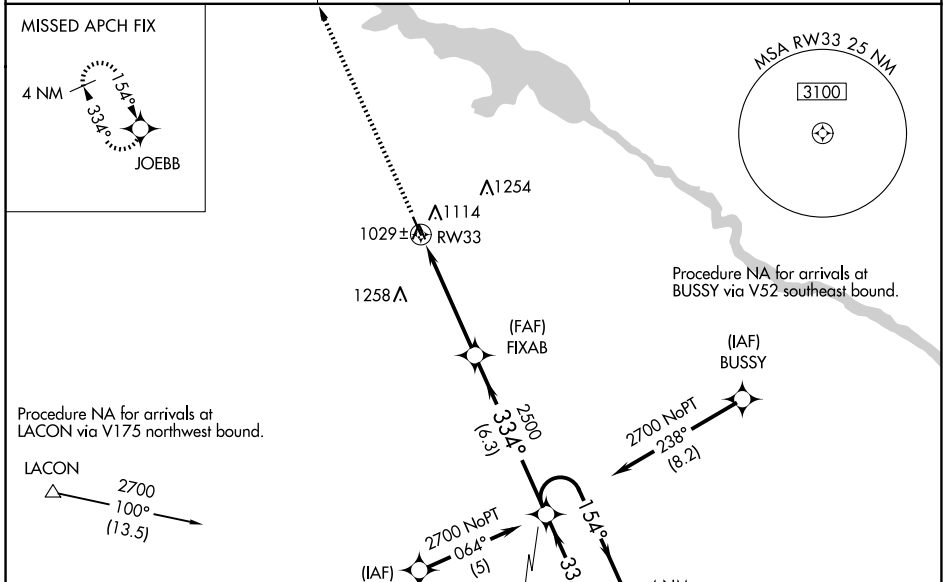
KNOXVILLE MUNI (O3V)

**⚠** DME/DME RNP-0.3 NA. Visibility reduction by helicopters NA. Baro-VNAV and VDP NA when using Pella altimeter setting.

**⚠** When local altimeter setting not received, use Pella altimeter setting and increase all DA 29 feet, all MDA 40 feet, LNAV/VNAV all Cats visibility 1/4 mile. For uncompensated Baro-VNAV systems, LNAV/VNAV NA below -16°C (4°F) or above 54°C (130°F).

MISSED APPROACH: Climb to 3000 direct JOEBB and hold.

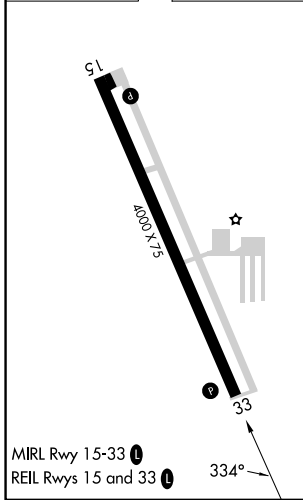
AWOS-3 <b>119.775</b>	DES MOINES APP CON <b>123.9 307.15</b>	UNICOM <b>122.8 (CTAF)</b>
--------------------------	---	-------------------------------



NC-3, 15 MAY 2025 to 12 JUN 2025

NC-3, 15 MAY 2025 to 12 JUN 2025

ELEV 928	TDZE 928
----------	----------



3000	JOEBB	VGSI and RNAV glidepath not coincident (VGSI Angle 3.00/TCH 32).	4 NM
			Holding Pattern
*LNAV only.	*1.4 NM to RW33	FIXAB	154°
			2700
			GP 3.00°
			TCH 40
	1.4 NM	3.4 NM	6.3 NM
CATEGORY	A	B	C
LNAV/VNAV DA	1299-1¼	371 (400-1¼)	NA
LNAV MDA	1400-1	472 (500-1)	NA
CIRCLING	1480-1	552 (600-1)	NA