

|  |                        |                             |   |
|--|------------------------|-----------------------------|---|
| WAAS<br>CH <b>77922</b><br><b>W15A</b> | APP CRS<br><b>153°</b> | Rwy Idg<br>TDZE<br>Apt Elev | <b>4400</b><br><b>828</b><br><b>833</b> |
|--|------------------------|-----------------------------|---|

# RNAV (GPS) RWY 15

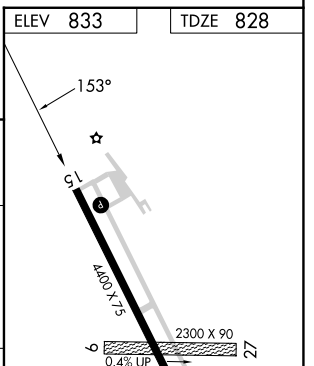
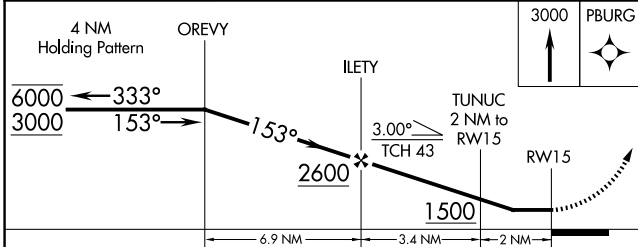
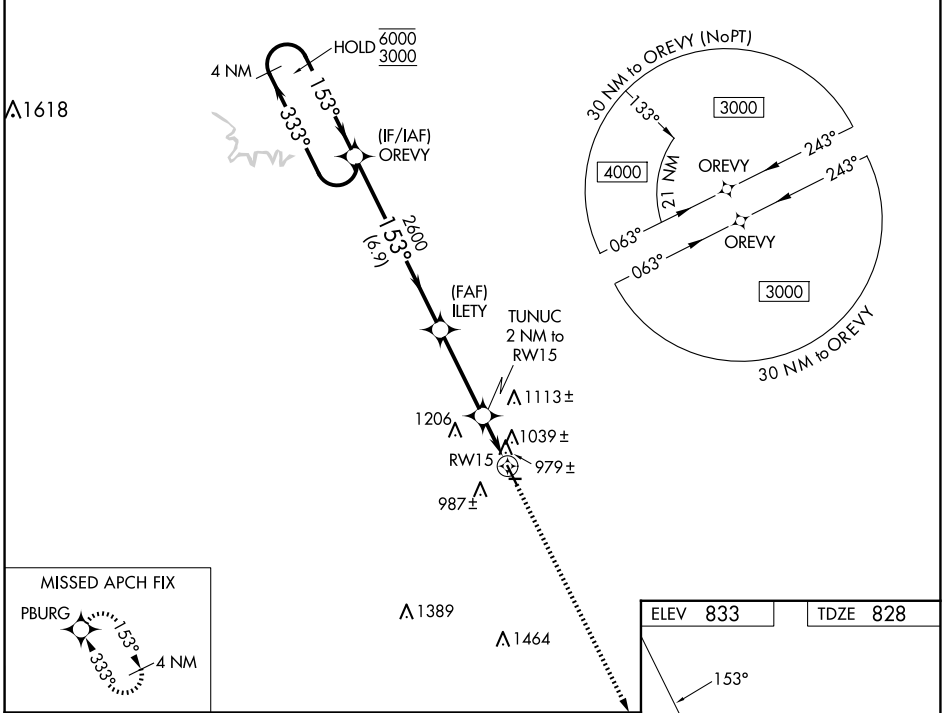
MONTICELLO RGNL (MXO)

RNP APCH - GPS.

**⚠** Circling NA to Rwys 9 and 27. Straight-in Rwy 15 NA at night, Circling Rwy 15 NA at night. Rwy 15 helicopter visibility reduction below 1 SM NA. When local altimeter setting not received, use Dubuque altimeter setting and increase all MDAs 100 feet; increase LP Cat C, LNAV Cat C and Circling Cat C visibility 1/2 SM.

MISSED APPROACH: Climb to 3000 direct PBURG and hold.

|                          |   |                                 |
|--------------------------|---|---------------------------------|
| AWOS-3<br><b>119.275</b> | CEDAR RAPIDS APP CON *<br><b>134.05 266.8</b> | UNICOM<br><b>122.8 (CTAF) 0</b> |
|--------------------------|---|---------------------------------|



| CATEGORY | A                     | B                     | C                             | D  |
|----------|-----------------------|-----------------------|-------------------------------|----|
| LP MDA   | 1240-1                | 412 (500-1)           | 1240-1 1/8<br>412 (500-1 1/8) | NA |
| LNAV MDA | 1300-1                | 472 (500-1)           | 1300-1 3/8<br>472 (500-1 3/8) | NA |
| CIRCLING | 1380-1<br>547 (600-1) | 1400-1<br>567 (600-1) | 1520-2<br>687 (700-2)         | NA |

MIRL Rwy 15-33 0

REIL Rwys 15 and 33 0

NC-3, 15 MAY 2025 to 12 JUN 2025

NC-3, 15 MAY 2025 to 12 JUN 2025