

WAAS CH <b>93522</b> <b>W36A</b>	APP CRS <b>360°</b>	Rwy Idg TDZE Apt Elev	<b>6401</b> <b>1193</b> <b>1213</b>
--	------------------------	-----------------------------	---

# RNAV (GPS) RWY 36

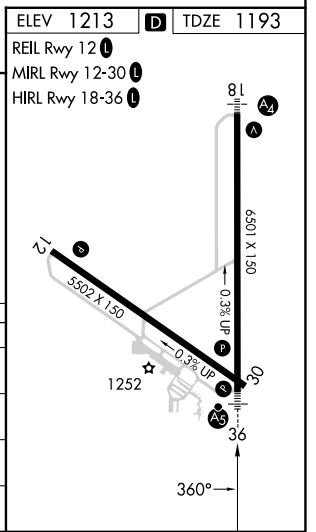
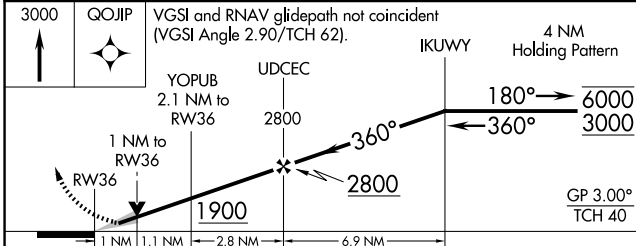
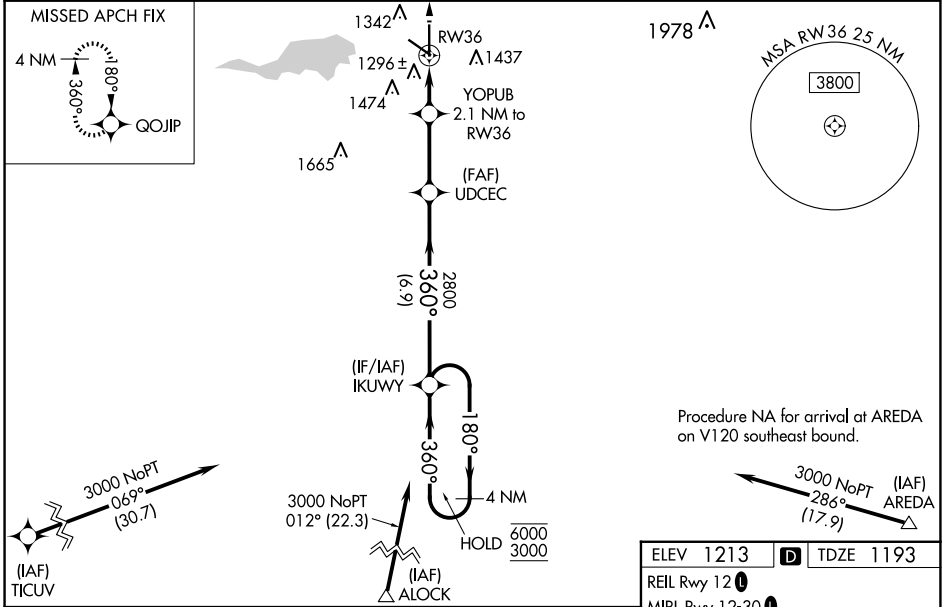
MASON CITY MUNI (MCW)

**RNP APCH-GPS.**

**⚠** For uncompensated Baro-VNAV systems, LNAV/VNAV NA below -17°C or above 54°C. Baro-VNAV and VDP NA when using Charles City altimeter setting. For inop ALS, increase LNAV/VNAV visibility to 3/8 SM and LNAV Cats C and D to 1 SM. When local altimeter setting not received, use Charles City altimeter setting: increase LPV DA to 1480 feet, LNAV/VNAV DA to 1562 and visibility all Cats 1/8 SM; increase all MDA 100 feet, LNAV Cats C and D visibility 3/8 SM and Circling Cat C 1/4 SM. For inop ALS when using Charles City altimeter, increase LPV visibility to 3/8 SM, LNAV/VNAV visibility to 1 SM and LNAV Cats C/D to 1 1/8 SM.

**MALSRL**  
 MISSED APPROACH: Climb to 3000 direct QOJIP and hold.

ASOS <b>120.3</b>	MINNEAPOLIS CENTER <b>127.3 257.675</b>	UNICOM <b>123.0 (CTAF) 0</b>
----------------------	--	---------------------------------



CATEGORY	A	B	C	D
LPV DA		1393-1/2	200 (200-1/2)	
LNAV/VNAV DA		1475-1/2	282 (300-1/2)	
LNAV MDA	1560-1/2	367 (400-1/2)	1560-5/8	367 (400-5/8)
CIRCLING	1680-1 467 (500-1)	1760-1 547 (600-1)	1780-1 1/2 567 (600-1 1/2)	1780-2 567 (600-2)

NC-3, 15 MAY 2025 to 12 JUN 2025

NC-3, 15 MAY 2025 to 12 JUN 2025