

APP CRS	Rwy Idg	4000
179°	TDZE	1092
	Apt Elev	1092

RNAV (GPS) RWY 18

BOLIVAR MUNI (M17)

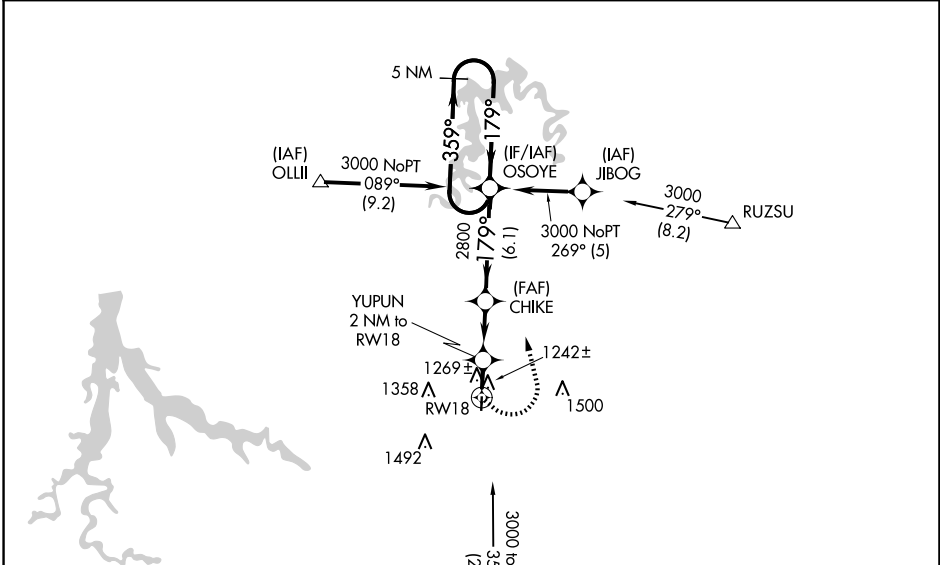
RNP APCH - GPS.

▼ Rwy 18 helicopter visibility reduction below 1 SM NA.
▲ NA Use Springfield-Branson Ntl altimeter setting.
 Straight-in and Circling Rwy 18 NA at night.

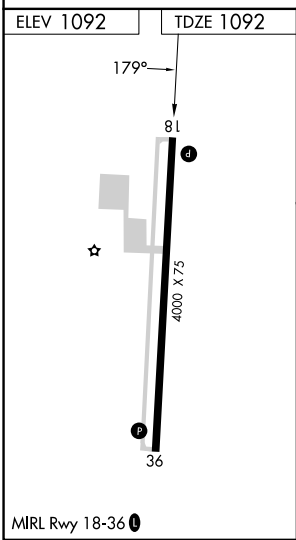
MISSED APPROACH: Climbing left turn to 3000 direct OSOYE and hold.

SPRINGFIELD APP CON
124.95 318.2

UNICOM
123.0 (CTAF) 1



Holding not required for arrivals on SGF VORTAC airway radials 075 CW 272.



3000	OSOYE	VGSIs and descent angles not coincident (VGSIs Angle 3.75/TCH 40).		5 NM Holding Pattern
3000	OSOYE	CHIKE	OSOYE	3000
1760	1760	2800	2800	2800
2 NM	3.2 NM	6.1 NM		
YUPUN 2 NM to RWY 18	CHIKE	OSOYE		
3.04° TCH 38	179°	359°	179°	
36	36	36	36	36
CATEGORY	A	B	C	D
LNAV MDA	1600-1	508 (600-1)	1600-1 3/8 508 (600-1 3/8)	NA
CIRCLING	1660-1	568 (600-1)	1740-1 3/4 648 (700-1 3/4)	NA

NC-3, 15 MAY 2025 to 12 JUN 2025

NC-3, 15 MAY 2025 to 12 JUN 2025