

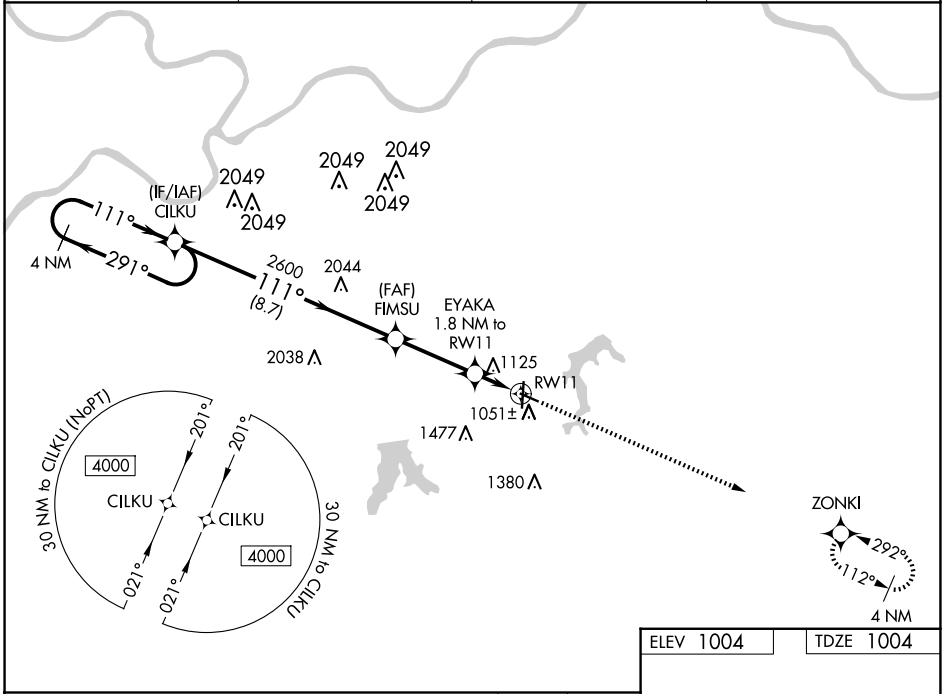
WAAS CH <b>99405</b> <b>W11A</b>	APP CRS <b>111°</b>	Rwy Idg <b>4000</b> TDZE <b>1004</b> Apt Elev <b>1004</b>
--	------------------------	---

# RNAV (GPS) RWY 11

KANSAS CITY/LEE'S SUMMIT RGNL (LX'T)

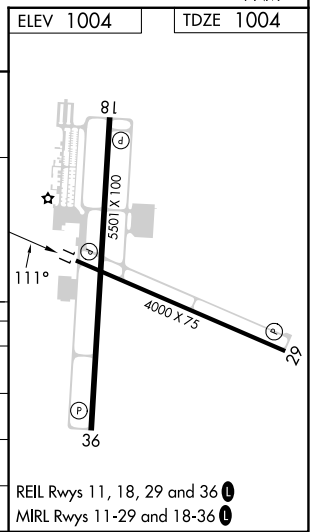
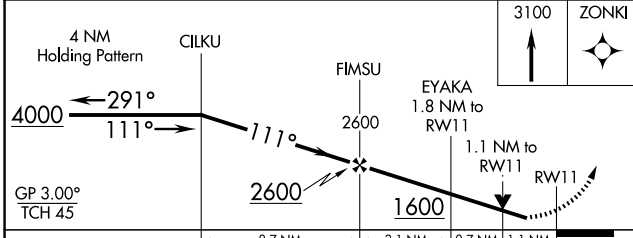
RNP APCH - GPS.		MISSED APPROACH: Climb to 3100 direct ZONKI and hold.
<p>▼ For uncompensated Baro-VNAV systems, LNAV/VNAV NA below -17°C or above 54°C. Rwy 11 helicopter visibility reduction below ¾ SM NA.</p>		

ASOS <b>124.175</b>	KANSAS CITY APP CON <b>118.4 307.35</b>	CLNC DEL <b>118.45</b>	UNICOM <b>122.8</b> (CTAF) <b>1</b>
------------------------	--	---------------------------	--



NC-3, 15 MAY 2025 to 12 JUN 2025

NC-3, 15 MAY 2025 to 12 JUN 2025



CATEGORY	A	B	C	D
LPV DA		1254-1	250 (300-1)	
LNAV/VNAV DA		1381-1¼	377 (400-1¼)	
LNAV MDA		1380-1	376 (400-1)	
<b>C</b> CIRCLING	1440-1 436 (500-1)	1540-1 536 (600-1)	1780-2¼ 776 (800-2¼)	1780-2½ 776 (800-2½)