

APP CRS	Rwy Idg	<b>3600</b>
<b>178°</b>	TDZE	<b>916</b>
	Apt Elev	<b>916</b>

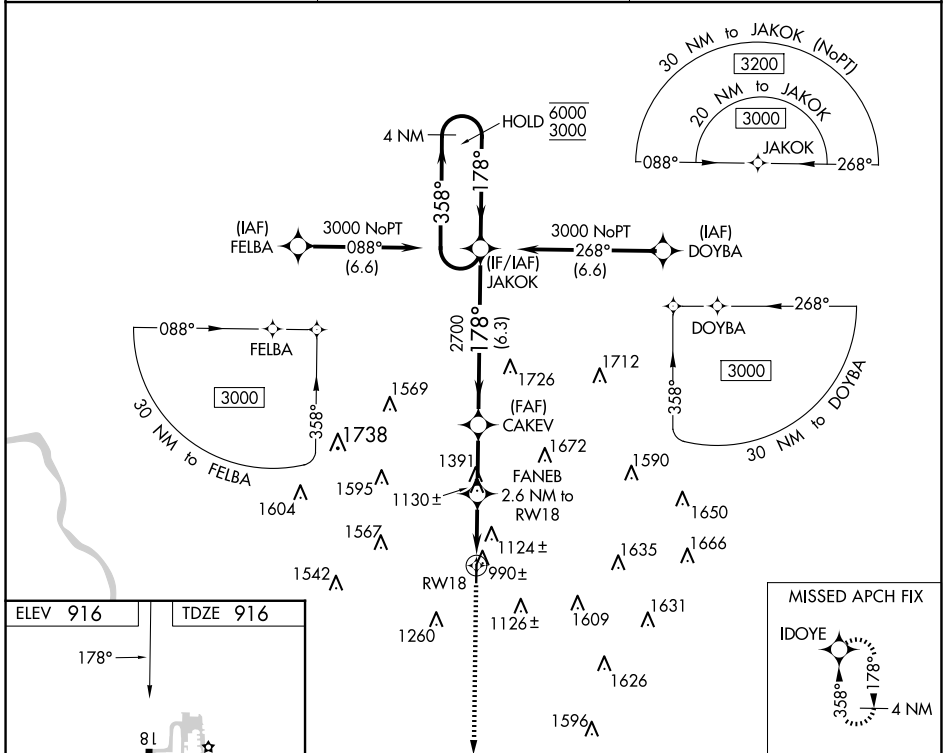
# RNAV (GPS) RWY 18

GOULD PETERSON MUNI (K57)

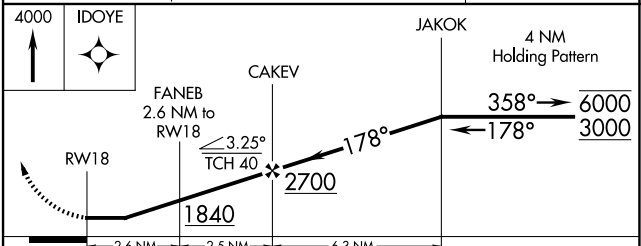
RNP APCH - GPS.		MISSED APPROACH: Climb to 4000 direct IDOYE and hold, continue climb-in-hold to 4000.
▽ Rwy 18 helicopter visibility reduction below 1 SM NA. ▲ NA Use Shenandoah altimeter setting; when not received, use Clarinor altimeter setting and increase all MDAs 20 feet and visibility LNAV Cat C ½ SM. Straight-in Rwy 18 NA at night, Circling Rwy 18 NA at night.		
SDA AWOS-3 <b>125.525</b>	MINNEAPOLIS CENTER <b>119.6 290.4</b>	CTAF <b>122.9</b>

NC-3, 15 MAY 2025 to 12 JUN 2025

NC-3, 15 MAY 2025 to 12 JUN 2025



ELEV 916	TDZE 916
178° →	
81	
3600 X 75	
36	
MIRL Rwy 18-36	
REIL Rws 18 and 36	



CATEGORY	A	B	C	D
LNAV MDA	1440-1	524 (600-1)	1440-1½ 524 (600-1½)	NA
<b>C</b> CIRCLING	1520-1 604 (700-1)	1540-1 624 (700-1)	1680-2¼ 764 (800-2¼)	NA