

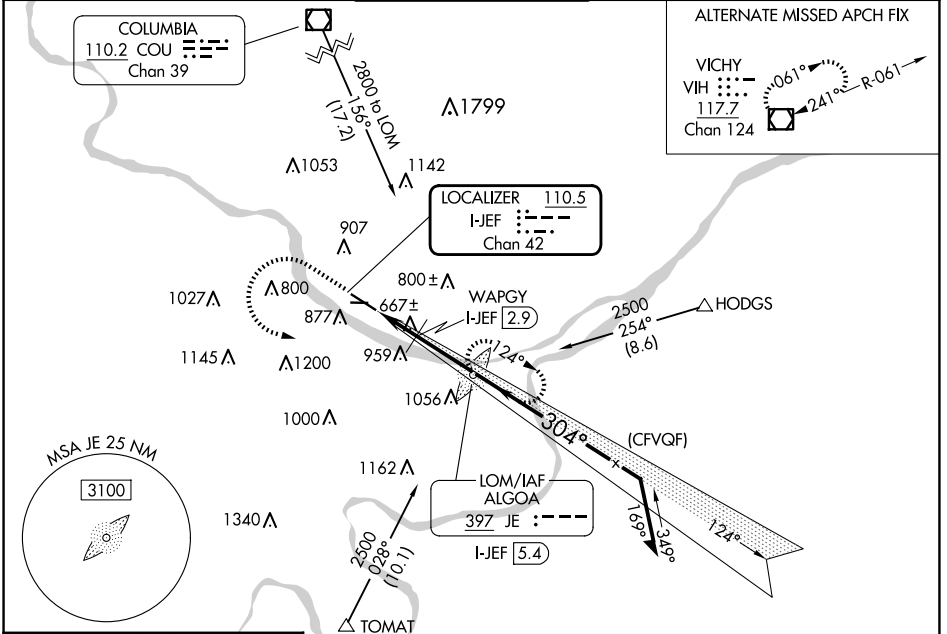
LOC/DME I-JEF 110.5 Chan 42	APP CRS 304°	Rwy Idg TDZE Apt Elev	6000 549 549
---	------------------------	-----------------------------	---

ILS or LOC RWY 30

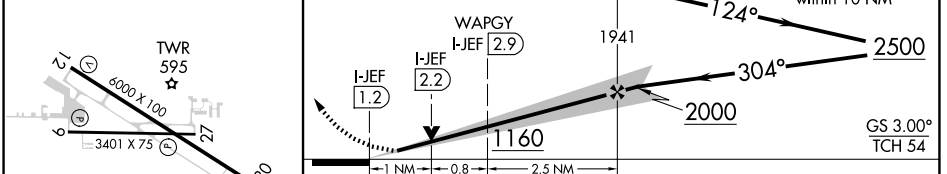
JEFFERSON CITY MEML (JEF)

ADF required.		MALSR	MISSED APPROACH: Climb to 1500 then climbing left turn to 2800 direct ALGOA LOM and hold, continue climb-in-hold to 2800.	
<p>⚠ Circling Rwy 9 NA at night. For inop ALS increase S-LOC 30 Cats C/D visibility to 1 3/4 SM and WAPGY fix minimums: S-LOC 30 Cats C/D visibility to 1 SM.</p>				

ASOS 133.625	MIZZU APP CON 124.375 353.925	JEFFERSON CITY TOWER* 125.6 (CTAF) 1	GND CON 121.7	UNICOM 122.95
------------------------	---	---	-------------------------	-------------------------



ELEV 549	TDZE 549	1500	2800	JE	JE LOM ALGOA I-JEF 5.4	VGSi and ILS glidepath not coincident (VGSi Angle 3.00/TCH 50).
----------	----------	------	------	----	------------------------	---



CATEGORY	A	B	C	D
S-ILS 30	749-1/2		200 (200-1/2)	
S-LOC 30	1160-1/2	611 (700-1/2)	1160-1 3/8	611 (700-1 3/8)
C CIRCLING	1280-1	731 (800-1)	1320-2 1/4 771 (800-2 1/4)	1560-3 1011 (1100-3)
WAPGY FIX MINIMUMS				
S-LOC 30	920-1/2	371 (400-1/2)	920-5/8	371 (400-5/8)
C CIRCLING	1280-1	731 (800-1)	1320-2 1/4 771 (800-2 1/4)	1560-3 1011 (1100-3)

NC-3, 15 MAY 2025 to 12 JUN 2025

NC-3, 15 MAY 2025 to 12 JUN 2025