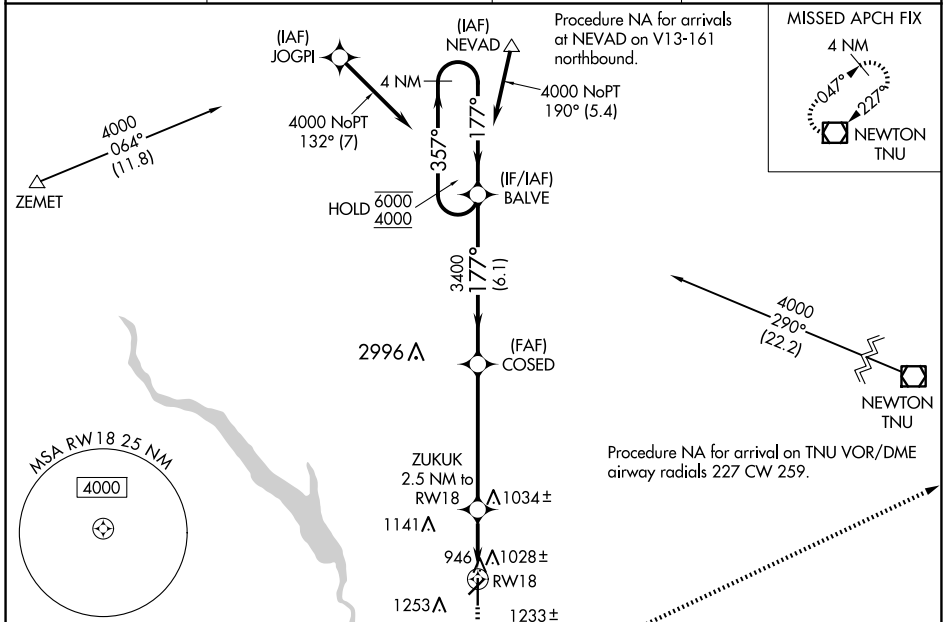


WAAS CH 82720 W18A	APP CRS 177°	Rwy Idg 5500 TDZE 903 Apt Elev 910
----------------------------------------	------------------------	---------------------------------------------------------------

RNAV (GPS) RWY 18

ANKENY RGNL (IKV)

RNP APCH - GPS.		MISSED APPROACH: Climb to 1600 then climbing left turn to 4000 direct TNU VOR/DME and hold.	
AWOS-3 119.175	DES MOINES APP CON 123.9 307.15	CLNC DEL 126.65	UNICOM 122.9 (CTAF)

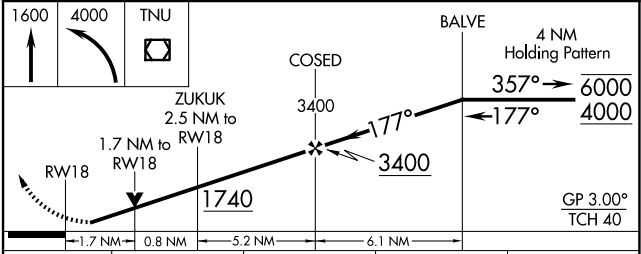


NC-3, 15 MAY 2025 to 12 JUN 2025

NC-3, 15 MAY 2025 to 12 JUN 2025

ELEV 910 **D** TDZE 903

MIRL Rwy 4-22 and 18-36 **D**
REIL Rwy 4, 18 and 36 **D**
REIL Rwy 22



CATEGORY	A	B	C	D
LPV DA		1153- ³ / ₄	250 (300- ³ / ₄)	
LNAV/VNAV DA		1354-1 ³ / ₈	451 (500-1 ³ / ₈)	
LNAV MDA	1480-1	577 (600-1)	1480-1 ⁵ / ₈	577 (600-1 ⁵ / ₈)
C CIRCLING	1560-1	650 (700-1)	1560-1 ³ / ₄	1760-2 ³ / ₄ 850 (900-2 ³ / ₄)