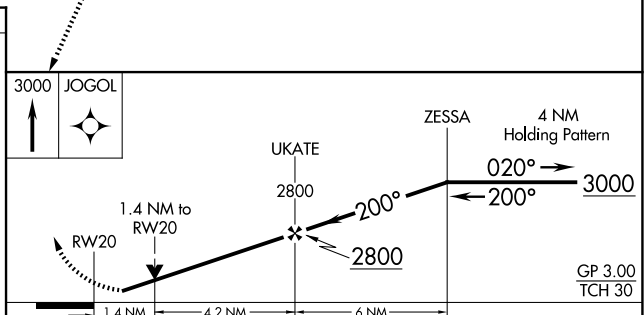
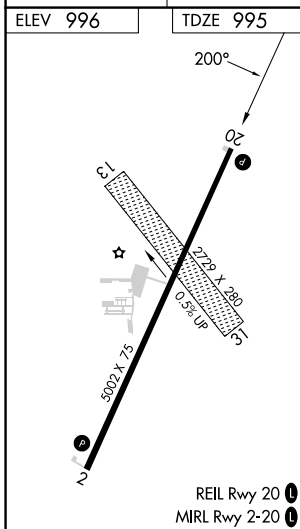
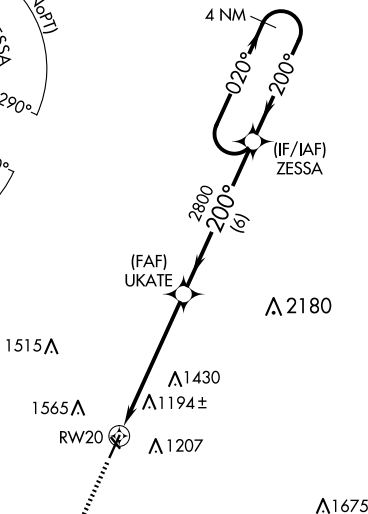
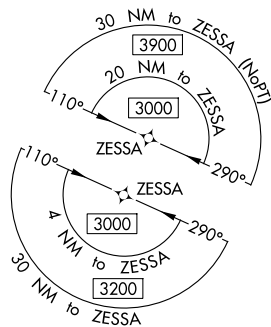


WAAS CH <b>90541</b> <b>W20A</b>	APP CRS <b>200°</b>	Rwy Idg TDZE Apt Elev	<b>5002</b> <b>995</b> <b>996</b>
--	------------------------	-----------------------------	---

# RNAV (GPS) RWY 20

SCHENCK FLD (ICL)

RNP APCH - GPS.		MISSED APPROACH: Climb to 3000 direct JOGOL and hold.
<p><b>⚠</b> For uncompensated Baro-VNAV systems, LNAV/VNAV NA below -16°C (4°F) or above 54°C (130°F). Circling NA west of Rwy 2-20. Circling NA to Rwys 13 and 31. Rwy 20 helicopter visibility reduction below ¾ SM NA.</p>		
AWOS-3 <b>132.025</b>	MINNEAPOLIS CENTER <b>119.6 290.4</b>	UNICOM <b>122.8 (CTAF) 0</b>



CATEGORY	A	B	C	D
LPV DA	1261-1		266 (300-1)	
LNAV/VNAV DA	1489-1 <sup>3</sup> / <sub>8</sub>		494 (500-1 <sup>3</sup> / <sub>8</sub> )	
LNAV MDA	1460-1		1460-1 <sup>3</sup> / <sub>8</sub>	
<input checked="" type="checkbox"/> CIRCLING	1540-1	1720-1	1780-2 <sup>1</sup> / <sub>4</sub>	1780-2 <sup>1</sup> / <sub>2</sub>
	544 (600-1)	724 (800-1)	784 (800-2 <sup>1</sup> / <sub>4</sub> )	784 (800-2 <sup>1</sup> / <sub>2</sub> )

NC-3, 15 MAY 2025 to 12 JUN 2025

NC-3, 15 MAY 2025 to 12 JUN 2025