

APP CRS	Rwy Idg	4100
330°	TDZE	1215
	Apt Elev	1231

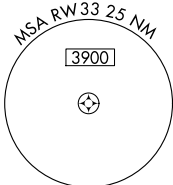
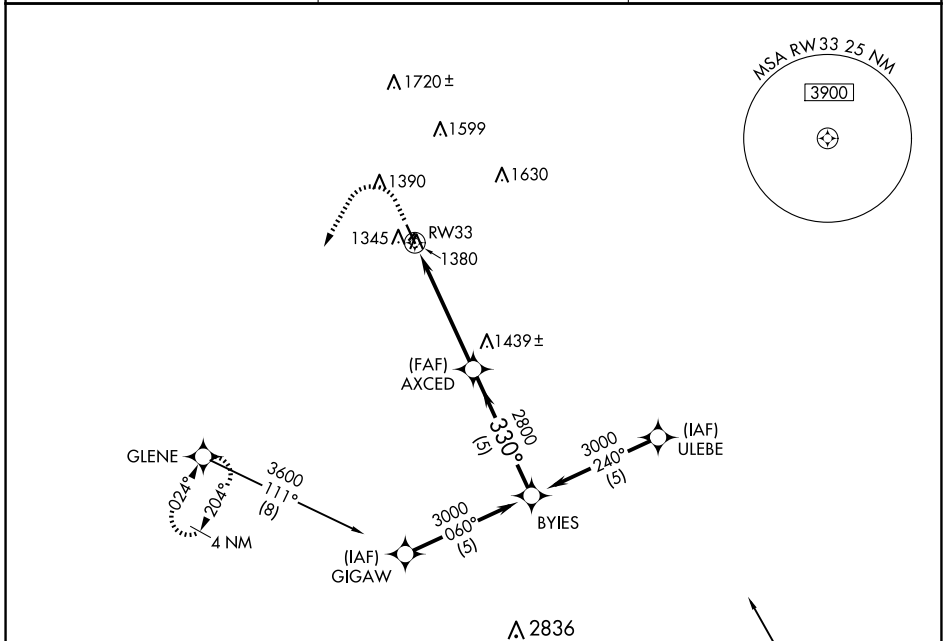
GPS RWY 33

HARLAN MUNI (HNR)

NA Procedure NA at night. Helicopter visibility reduction below 1 SM NA. Circling NA to Rwy 3 and 21.

MISSED APPROACH: Climb to 2000, then climbing left turn to 3600 direct GLENE and hold.

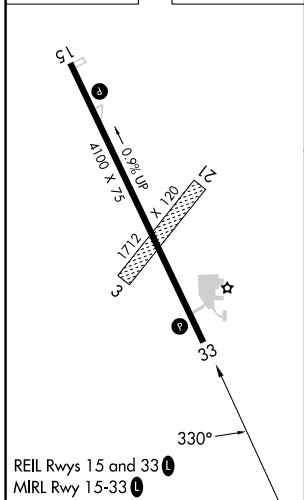
AWOS-3 118.325	OMAHA APP CON 124.5 263.0	UNICOM 122.8 (CTAF)
--------------------------	-------------------------------------	-------------------------------



NC-3, 15 MAY 2025 to 12 JUN 2025

NC-3, 15 MAY 2025 to 12 JUN 2025

ELEV 1231	TDZE 1215
-----------	-----------



2000	3600	GLENE	VGSI and descent angles not coincident (VGSI Angle 3.00/TCH 40).
		AXCED	BYIES
		2800	3000
		2.96° TCH 34	Procedure Turn NA
5 NM		5 NM	
CATEGORY	A	B	C
S-33	1640-1	425 (500-1)	NA
CIRCLING	1780-1	549 (600-1)	NA