

WAAS CH 72733 W19A	APP CRS 195°	Rwy Idg 4000 TDZE 880 Apt Elev 880
--	------------------------	---

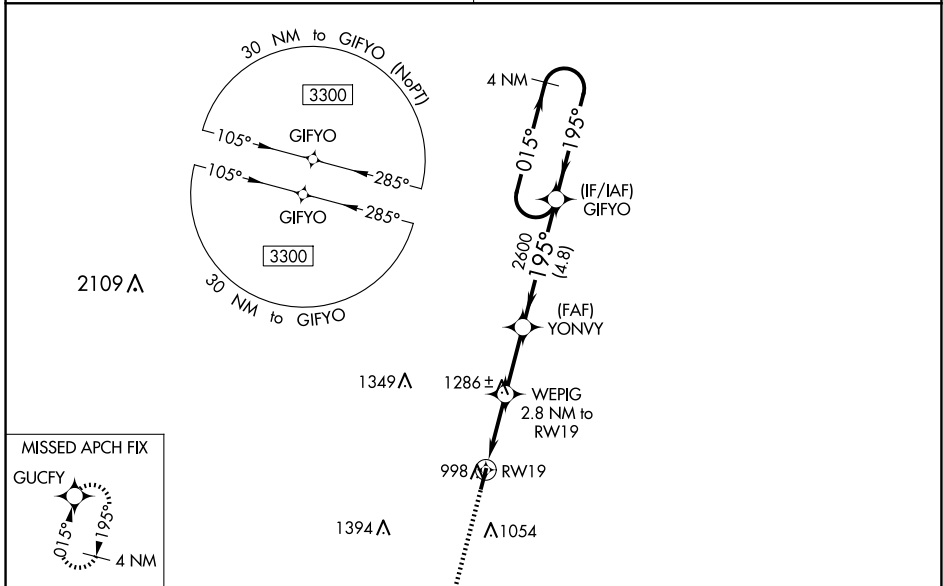
RNAV (GPS) RWY 19

A PAUL VANCE FREDERICKTOWN RGNL (H88)

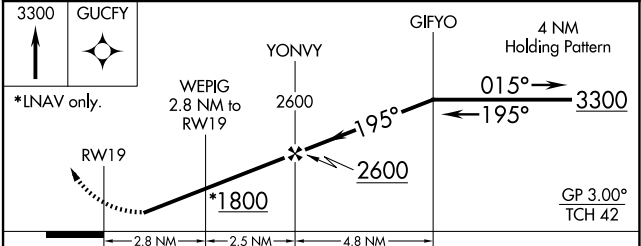
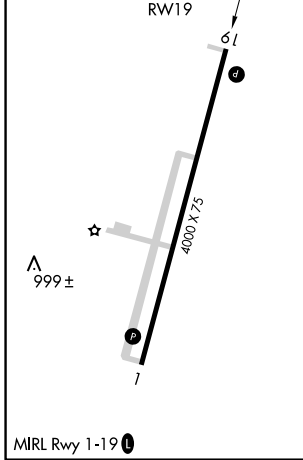
▼ Baro-VNAV NA. DME/DME RNP-0.3 NA. Rwy 19 helicopter visibility reduction below 3/4 SM NA. Use Farmington altimeter setting; when not received, use Sparta altimeter setting and increase all DA 111 feet, all MDA 120 feet, LPV all Cats visibility 3/8 mile, LNAV/VNAV all Cats visibility 1/2 mile, LNAV Cat B visibility 1/4 mile and Cat C visibility 1/2 mile and increase Circling all Cats visibility 1/4 mile.

▲ NA MISSED APPROACH: Climb to 3300 direct GUCFY and hold.

KANSAS CITY CENTER 127.475 346.275	UNICOM 122.8 (CTAF) 0
--	---------------------------------



ELEV 880	TDZE 880
-----------------	-----------------



CATEGORY	A	B	C	D
LPV DA	1166-1 286 (300-1)			NA
LNAV/VNAV DA	1536-2 1/4 656 (700-2 1/4)			NA
LNAV MDA	1580-1	700 (700-1)	1580-2 700 (700-2)	NA
C CIRCLING	1580-1	700 (700-1)	1640-2 1/4 760 (800-2 1/4)	NA

NC-3, 15 MAY 2025 to 12 JUN 2025

NC-3, 15 MAY 2025 to 12 JUN 2025