

WAAS CH <b>45815</b> <b>W24A</b>	APP CRS <b>243°</b>	Rwy Idg TDZE <b>1156</b> Apt Elev <b>1156</b>
----------------------------------------	------------------------	-----------------------------------------------------

# RNAV (GPS) RWY 24

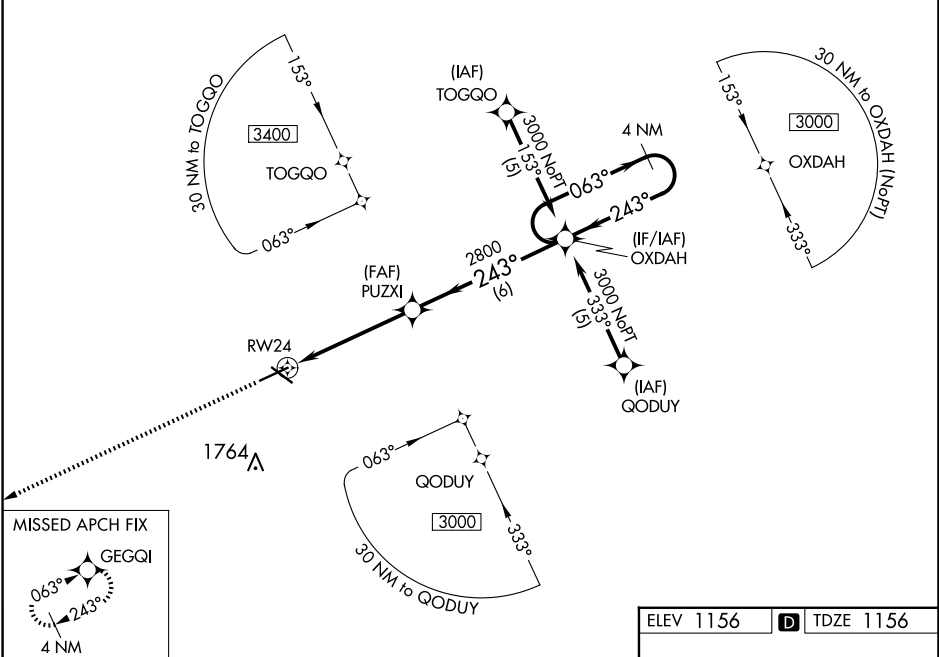
FORT DODGE RGNL (FOD)

RNP APCH

Baro-VNAV and VDP NA when using Webster City altimeter setting. For uncompensated Baro-VNAV systems, LNAV/VNAV NA below -17°C or above 54°C. When local altimeter setting not received, use Webster City altimeter setting: increase LPV DA to 1448 feet; increase LNAV/VNAV DA to 1546 feet; increase all MDAs 60 feet and LNAV Cat C/D and Circling Cat C visibility ¼ mile.

MISSED APPROACH:  
Climb to 3000 direct GEGQI and hold.

AWOS-3PT <b>118.775</b>	MINNEAPOLIS CENTER <b>134.0 288.3</b>	UNICOM <b>123.0 (CTAF)</b>
----------------------------	------------------------------------------	-------------------------------

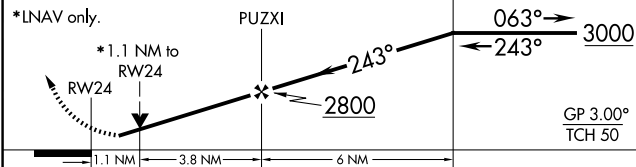


NC-3, 15 MAY 2025 to 12 JUN 2025

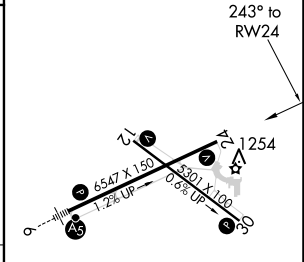
NC-3, 15 MAY 2025 to 12 JUN 2025

3000 GEGQI VGSB and RNAV glidepath not coincident (VGSB Angle 3.00/TCH 41).

OXDAH 4 NM Holding Pattern



ELEV 1156	<b>D</b> TDZE 1156
-----------	--------------------



CATEGORY	A	B	C	D
LPV DA		1406-1	250 (300-1)	
LNAV/VNAV DA		1504-1¼	348 (400-1¼)	
LNAV MDA	1560-1	404 (500-1)	1560-1½ 404 (500-1½)	1560-1¼ 404 (500-1¼)
CIRCLING	1560-1 404 (500-1)	1620-1 464 (500-1)	1740-1½ 584 (600-1½)	2080-3 924 (1000-3)

HIRL Rwy 6-24 **1**  
MIRL Rwy 12-30 **1**  
REIL Rws 12, 24 and 30 **1**