

|  |                        |                             |   |
|--|------------------------|-----------------------------|---|
| WAAS<br>CH <b>72807</b><br><b>W14A</b> | APP CRS<br><b>147°</b> | Rwy Idg<br>TDZE<br>Apt Elev | <b>4600</b><br><b>1142</b><br><b>1145</b> |
|--|------------------------|-----------------------------|---|

# RNAV (GPS) RWY 14

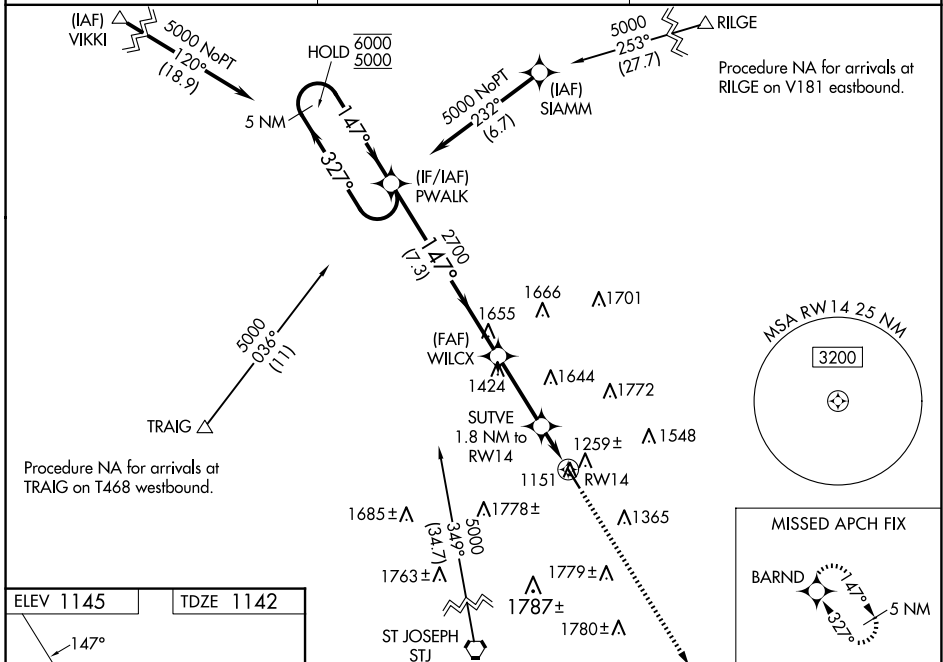
NORTHWEST MISSOURI RGNL (EVU)

RNP APCH - GPS.

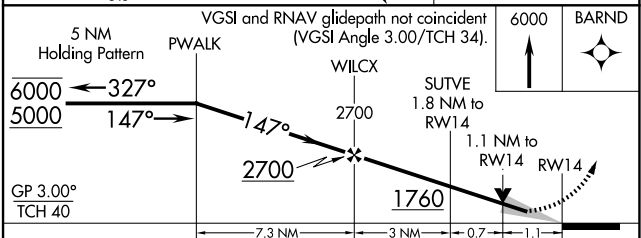
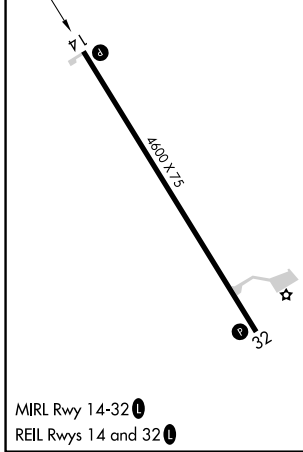
**NA** Circling NA east of Rwy 14-32. For uncompensated Baro-VNAV systems, LNAV/VNAV NA below -17°C or above 54°C. When local altimeter setting not received, use St. Joseph altimeter setting and increase LPV DA to 1517 feet, LNAV/VNAV DA to 1682 feet and all visibilities ½ SM. Increase all MDAs 140 feet, and LNAV visibility Cat C ¾ SM. Baro-VNAV and VDP NA when using St. Joseph altimeter setting.

**MISSED APPROACH:** Climb to 6000 direct BARND and hold, continue climb-in-hold to 6000.

|                            |  |                               |
|----------------------------|--|-------------------------------|
| AWOS-3PT<br><b>118.225</b> | MINNEAPOLIS CENTER<br><b>119.6 290.4</b> | UNICOM<br><b>122.8 (CTAF)</b> |
|----------------------------|--|-------------------------------|



|           |           |
|-----------|-----------|
| ELEV 1145 | TDZE 1142 |
|-----------|-----------|



| CATEGORY     | A                     | B                     | C                      | D  |
|--------------|-----------------------|-----------------------|------------------------|----|
| LPV DA       | 1392-1                | 250 (300-1)           |                        | NA |
| LNAV/VNAV DA | 1557-1¾               | 415 (500-1¾)          |                        | NA |
| LNAV MDA     | 1520-1                | 378 (400-1)           |                        | NA |
| CIRCLING     | 1560-1<br>415 (500-1) | 1600-1<br>455 (500-1) | 2120-3<br>975 (1000-3) | NA |

NC-3, 15 MAY 2025 to 12 JUN 2025

NC-3, 15 MAY 2025 to 12 JUN 2025