

WAAS CH <b>62808</b> <b>W18A</b>	APP CRS <b>182°</b>	Rwy Idg TDZE Apt Elev	<b>5000</b> <b>304</b> <b>304</b>
--	------------------------	-----------------------------	---

# RNAV (GPS) RWY 18

DEXTER MUNI (DXE)

RNP APCH.

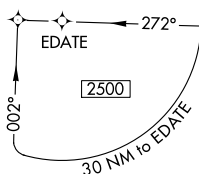
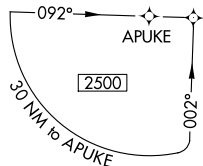
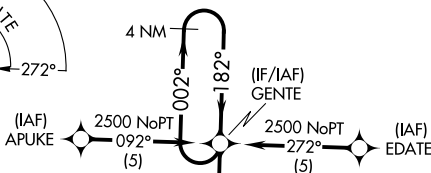
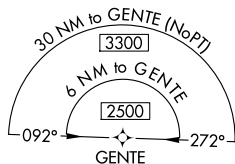
**▽** Baro-VNAV NA. Use Poplar Bluff altimeter setting, when not received use Cape Girardeau Rgnl altimeter setting and increase all DA 33 feet and LPV visibilities ¼ mile all Cats and increase all MDA 40 feet. Rwy 18 helicopter visibility reduction below ¾ SM NA.

MISSED APPROACH: Climb to 2500 direct GADLE and hold.

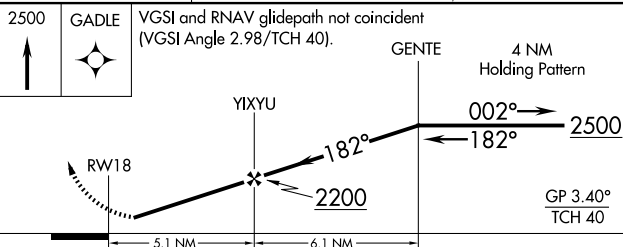
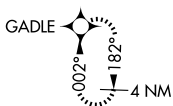
POF ASOS  
**124.225**

MEMPHIS CENTER  
**133.65 292.15**

UNICOM  
**122.7 (CTAF) 0**



MISSED APCH FIX



ELEV 304	TDZE 304
MIRL Rwy 18-36 0	

CATEGORY	A	B	C	D
LPV DA	724-1¼	420 (500-1¼)		NA
LNAV/VNAV DA	854-1¾	550 (600-1¾)		NA
LNAV MDA	1200-1¼	896 (900-1¼)	1200-2¾ 896 (900-2¾)	NA

NC-3, 15 MAY 2025 to 12 JUN 2025

NC-3, 15 MAY 2025 to 12 JUN 2025