

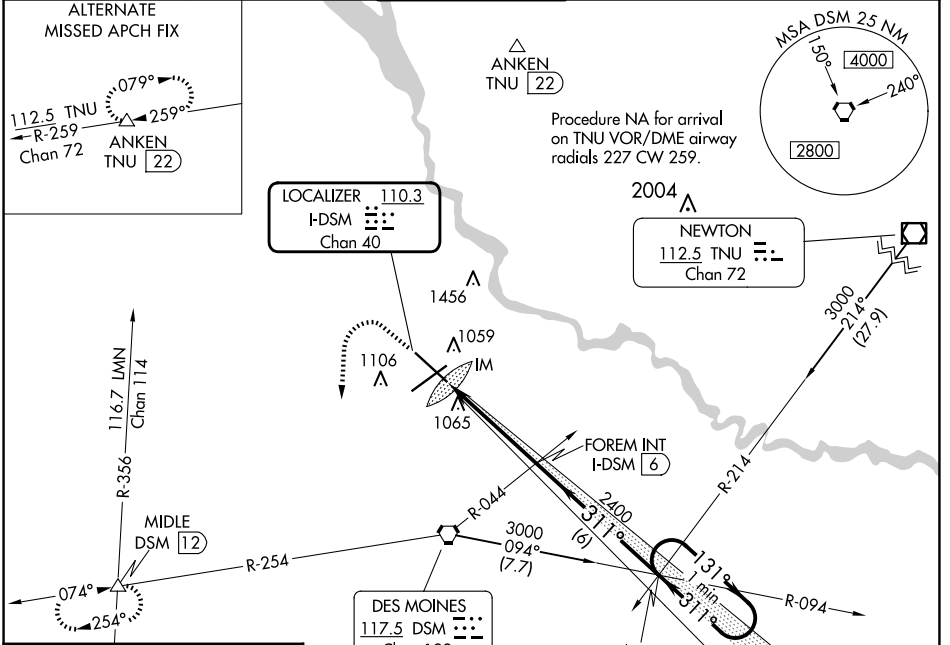
LOC/DME I-DSM 110.3 Chan 40	APP CRS 311°	Rwy ldg TDZE Apt Elev 9001 958 958
---	------------------------	--

ILS or LOC RWY 31

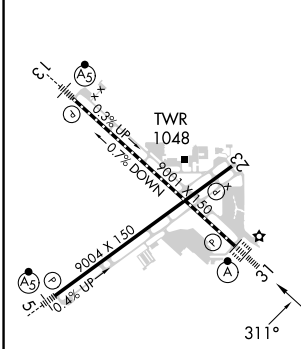
DES MOINES INTL (DSM)

<p>For inop ALS, increase S-ILS 31 Cat E visibility to RVR 4000 and S-LOC 31 Cat E visibility to RVR 6000.</p>	<p>ALSIF-2</p>	<p>MISSED APPROACH: Climb to 1600 then climbing left turn to 3000 on heading 180° and on DSM VORTAC R-254 to MIDDLE INT/12 DME and hold.</p>
	<p>Procedure NA for arrival on TNU VOR/DME airway radials 227 CW 259.</p>	

ATIS 119.55	DES MOINES APP CON 123.9 307.15	DES MOINES TOWER 118.3 257.8	GND CON 121.9 348.6	CLNC DEL 134.15 317.55
-----------------------	---	--	-------------------------------	----------------------------------

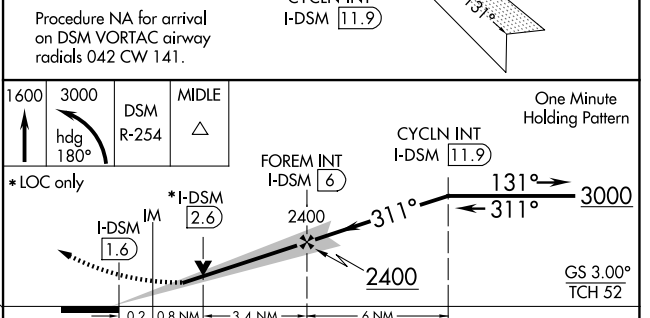


ELEV 958	D	TDZE 958
----------	----------	----------



REIL Rwy 5 and 23
TDZ/CL Rwy 31
HIRL Rwy 13-31 and 5-23
FAF to MAP 4.4 NM

Knots	60	90	120	150	180
Min:Sec	4:24	2:56	2:12	1:46	1:28



CATEGORY	A	B	C	D	E
S-ILS 31	1158/18 200 (200-½)				
S-LOC 31	1340/24 382 (400-½)	1340/35 382 (400-¾)			
C CIRCLING	1420-1 462 (500-1)	1600-1½ 1760-2½	1760-2½ 802 (900-2½)	1760-2¾ 802 (900-2¾)	

NC-3, 15 MAY 2025 to 12 JUN 2025

NC-3, 15 MAY 2025 to 12 JUN 2025