


LOC/DME I-DWW 111.5 Chan 52	APP CRS 053°	Rwy Idg TDZE Apt Elev	9004 931 958
---	------------------------	-----------------------------	---

ILS or LOC RWY 5

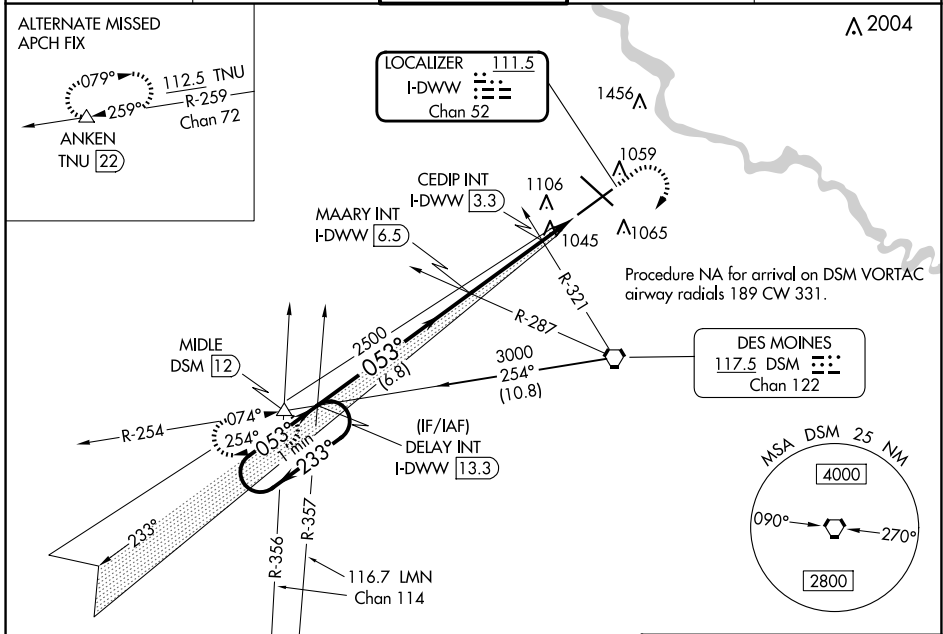
DES MOINES INTL (DSM)

▼ For inop ALS, increase S-LOC 5 Cats C and D visibility to 1 1/2 SM and CEDIP fix minimums Cats C and D visibility to RVR 5500.
▲ Autopilot coupled approach NA below 1256 MSL.
 #RVR 1800 authorized with use of FD or AP or HUD to DA.

MALSRR


MISSED APPROACH: Climb to 1600 then climbing right turn to 3000 direct DSM VORTAC then on DSM VORTAC R-254 to MIDDLE INT/DSM 12 DME and hold.

ATIS 119.55	DES MOINES APP CON 123.9 307.15	DES MOINES TOWER 118.3 257.8	GND CON 121.9 348.6	CLNC DEL 134.15 317.55
-----------------------	---	--	-------------------------------	----------------------------------



One Minute Holding Pattern

3000 \leftarrow 233° \rightarrow 053° \rightarrow 2500

GS 3.00°
 TCH 55

DELAY INT I-DWW **13.3**

1600 3000 DSM DSM MIDDLE
 R-254 R-254 Δ

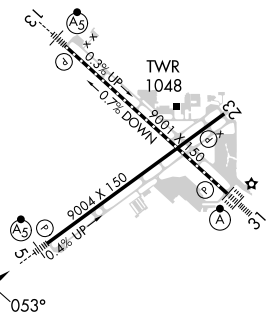
MAARY INT I-DWW **6.5** CEDIP INT I-DWW **3.3** *LOC only

*I-DWW **2.7** I-DWW **1.7**

*1440

2500

6.8 NM 3.2 NM 0.6 NM 1 NM

ELEV 958	D TDZE 931
REIL Rvws 5 and 23 TDZ/CL Rwy 31 HIRL Rvws 13-31 and 5-23	
	
FAF to MAP 4.8 NM	
Knots	60 90 120 150 180
Min:Sec	4:48 3:12 2:24 1:55 1:36

NC-3, 15 MAY 2025 to 12 JUN 2025

NC-3, 15 MAY 2025 to 12 JUN 2025