

WAAS CH 77603 W09A	APP CRS 089°	Rwy Idg TDZE Apt Elev	8175 857 869
--	------------------------	-----------------------------	---

RNAV (GPS) RWY 9

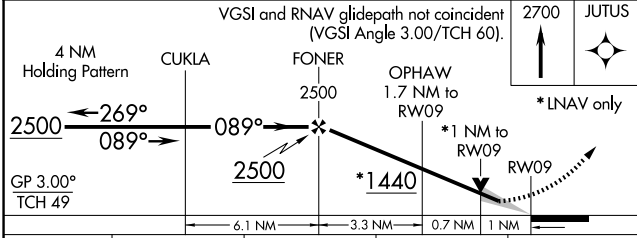
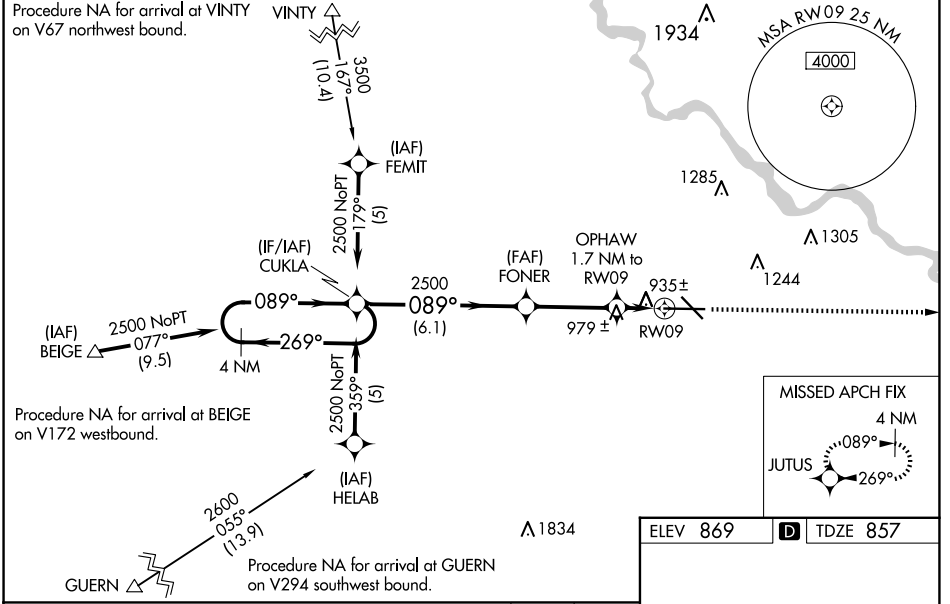
THE EASTERN IOWA (CID)

⚠ Baro-VNAV NA when using Iowa City altimeter setting. For uncompensated Baro-VNAV systems, LNAV/VNAV NA below -16°C (4°F) or above 47°C (116°F). DME/DME RNP-0.3 NA. When local altimeter setting not received use Iowa City altimeter setting: increase LPV DA to 1121 feet; increase LNAV/VNAV DA to 1268 feet and all visibilities to RVR 5000; increase all MDA 80 feet, LNAV Cat C visibility to RVR 4000, and Circling Cat C and D visibility ¼ SM. For inop MALSRS increase LNAV Cat D visibility to RVR 6000. VDP NA with Iowa City altimeter setting. When using Iowa City altimeter setting; for inoperative MALSRS, increase LPV all Cats visibility to RVR 5000, LNAV Cat C visibility to RVR 6000 and LNAV Cat D visibility to 1½ miles.
RVR 1800 authorized with use of FD or AP or HUD to DA, NA when using Iowa City altimeter setting.

MALSRS

MISSED APPROACH:
Climb to 2700 direct JUTUS and hold.

ATIS 124.15	CEDAR RAPIDS APP CON * 119.7 266.8	CEDAR RAPIDS TOWER * 118.7 (CTAF) 0 266.8	GND CON 121.6	CLNC DEL 125.45	UNICOM 122.95
-----------------------	--	---	-------------------------	---------------------------	-------------------------



ELEV 869 **D** TDZE 857

MIRL Rwy 13-31 **L**
HIRL Rwy 9-27 **L**
REIL Rwy 13

CATEGORY	A	B	C	D
LPV DA#		1057/24	200 (200-½)	
LNAV/VNAV DA		1204/40	347 (400-¾)	
LNAV MDA	1280-1 411 (500-1)	1320-1 451 (500-1)	1560-2 691 (700-2)	1240/50 383(400-1)
CIRCLING	1280-1 411 (500-1)	1320-1 451 (500-1)	1560-2 691 (700-2)	1560-2¼ 691 (700-2¼)

NC-3, 15 MAY 2025 to 12 JUN 2025

NC-3, 15 MAY 2025 to 12 JUN 2025