

WAAS CH 82438 W30A	APP CRS 305°	Rwy Idg 4000 TDZE 1121 Apt Elev 1125
--	------------------------	---

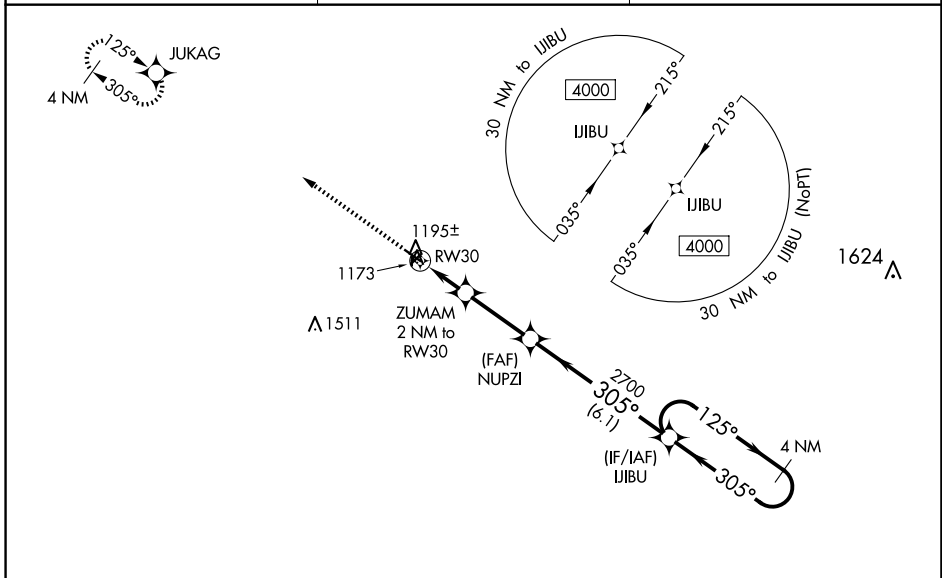
RNAV (GPS) RWY 30

NORTHEAST IOWA RGNL (CCY)

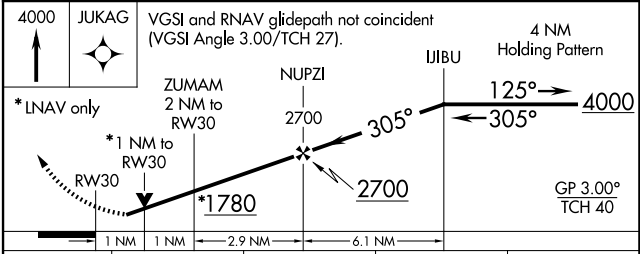
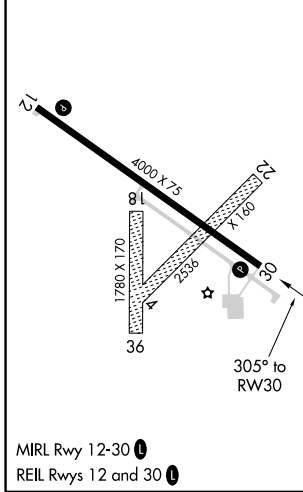
⚠ For uncompensated Baro-VNAV systems, LNAV/VNAV NA below -17°C (2°F) or above 54°C (130°F). DME/DME RNP-0.3 NA. Helicopter visibility reduction below 3/4 SM NA. When local altimeter setting not received, use Waterloo altimeter setting and increase all DA 110 feet and visibility 1/4 mile. Increase all MDA 120 feet, increase LNAV Cat C visibility 3/8 mile, and Circling visibility Cat C 1/2 mile. VDP and Baro-VNAV NA when using Waterloo altimeter setting. Circling Rwy 4-22 and 18-36 NA.

MISSED APPROACH: Climb to 4000 direct JUKAG and hold, continue climb-in-hold to 4000.

AWOS-3 125.525	WATERLOO APP CON ★ 118.9 251.15	UNICOM 122.8 (CTAF)
--------------------------	---	-------------------------------



ELEV 1125	TDZE 1121
------------------	------------------



CATEGORY	A	B	C	D
LPV DA	1371-1	250 (300-1)		NA
LNAV/VNAV DA	1371-1	250 (300-1)		NA
LNAV MDA	1460-1	339 (400-1)		NA
C CIRCLING	1520-1 395 (400-1)	1580-1 455 (500-1)	1760-1 3/4 635 (700-1 3/4)	NA

NC-3, 15 MAY 2025 to 12 JUN 2025

NC-3, 15 MAY 2025 to 12 JUN 2025