

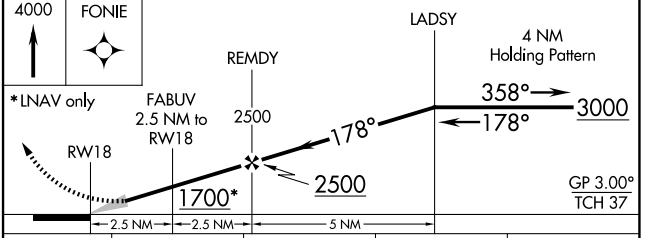
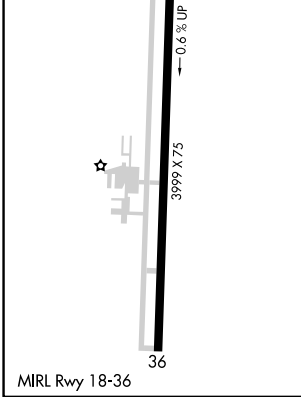
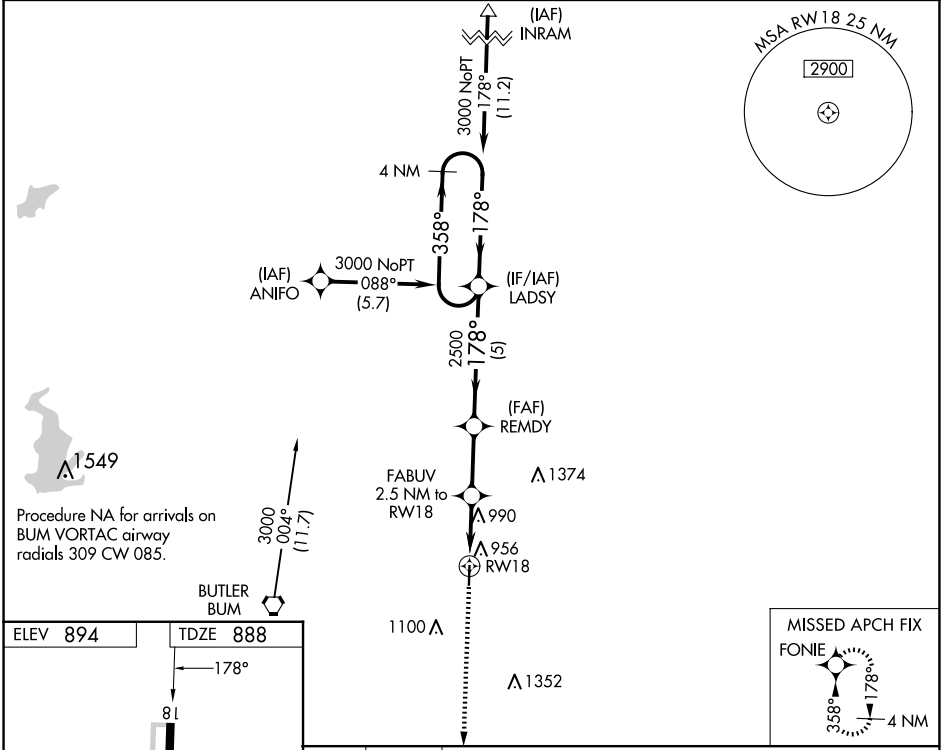
|  |                        |   |
|--|------------------------|---|
| WAAS<br>CH <b>82630</b><br><b>W18A</b> | APP CRS<br><b>178°</b> | Rwy Idg<br>TDZE <b>888</b><br>Apt Elev <b>894</b> |
|--|------------------------|---|

# RNAV (GPS) RWY 18

BUTLER MEML (BUM)

|           |   |  |
|-----------|---|--|
| RNP APCH. | <p>Baro-VNAV NA. Use Clinton altimeter setting; when not received, use Kansas City Downtown/Wheeler Fld altimeter setting and increase all DA/MDA 60 feet, increase LPV and LNAV/VNAV all Cats visibility 1/2 mile.</p> | <p>MISSED APPROACH: Climb to 4000 direct FONIE and hold, continue climb in hold to 4000.</p> |
|-----------|---|--|

|   |                      |
|---|----------------------|
| KANSAS CITY CENTER<br><b>125.55 327.0</b> | CTAF<br><b>122.9</b> |
|---|----------------------|



| CATEGORY     | A          | B               | C | D  |
|--------------|------------|-----------------|---|----|
| LPV DA       | 1220-1 1/8 | 332 (400-1 1/8) |   | NA |
| LNAV/VNAV DA | 1220-1 1/8 | 332 (400-1 1/8) |   | NA |
| LNAV MDA     | 1340-1     | 452 (500-1)     |   | NA |

NC-3, 15 MAY 2025 to 12 JUN 2025

NC-3, 15 MAY 2025 to 12 JUN 2025