

LOC I-BRL 108.9	APP CRS 359°	Rwy Idg TDZE Apt Elev	6102 694 698
---------------------------	------------------------	-----------------------------	---

ILS or LOC RWY 36

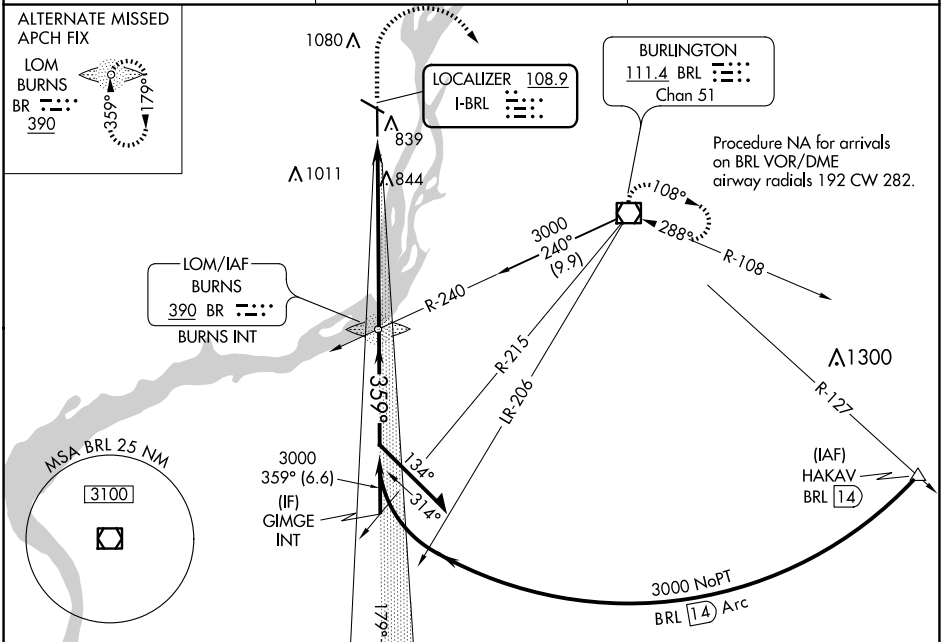
SOUTHEAST IOWA RGNL (B.R.L)

NA

MALSR

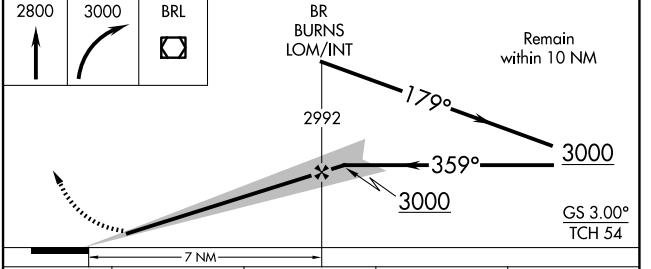
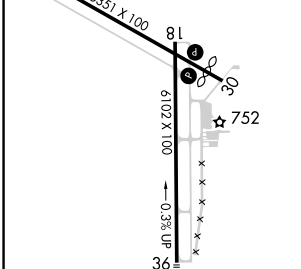
MISSED APPROACH: Climb to 2800 then climbing right turn to 3000 direct BRL VOR/DME and hold.

ASOS 118.025	CHICAGO CENTER 135.6 370.95	UNICOM 123.0 (CTAF)
------------------------	---------------------------------------	-------------------------------



ELEV 698	D	TDZE 694
----------	----------	----------

REIL Rwy 12, 18 and 30
MIRL Rwy 12-30
HIRL Rwy 18-36



	CATEGORY	A	B	C	D
S-ILS 36		894-1/2 200 (200-1/2)			
S-LOC 36		1140-1/2 446 (500-1/2)	1140-7/8 446 (500-7/8)	1140-1 446 (500-1)	1140-1 446 (500-1)
C CIRCLING		1180-1 482 (500-1)	1380-2 682 (700-2)	1380-2 1/4 682 (700-2 1/4)	1380-2 1/4 682 (700-2 1/4)

BURLINGTON, IOWA
Amdt 10C 20JUN19

40°47'N-91°08'W

SOUTHEAST IOWA RGNL (B.R.L)

ILS or LOC RWY 36

NC-3, 15 MAY 2025 to 12 JUN 2025

NC-3, 15 MAY 2025 to 12 JUN 2025