

VOR/DME ALO <b>112.2</b> Chan <b>59</b>	APP CRS <b>176°</b>	Rwy Idg TDZE Apt Elev	<b>6003</b> <b>871</b> <b>873</b>
---	------------------------	-----------------------------	---

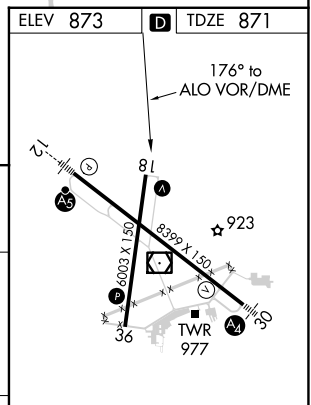
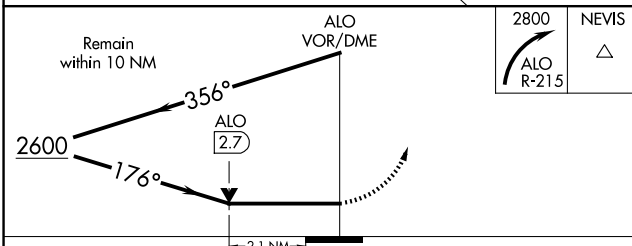
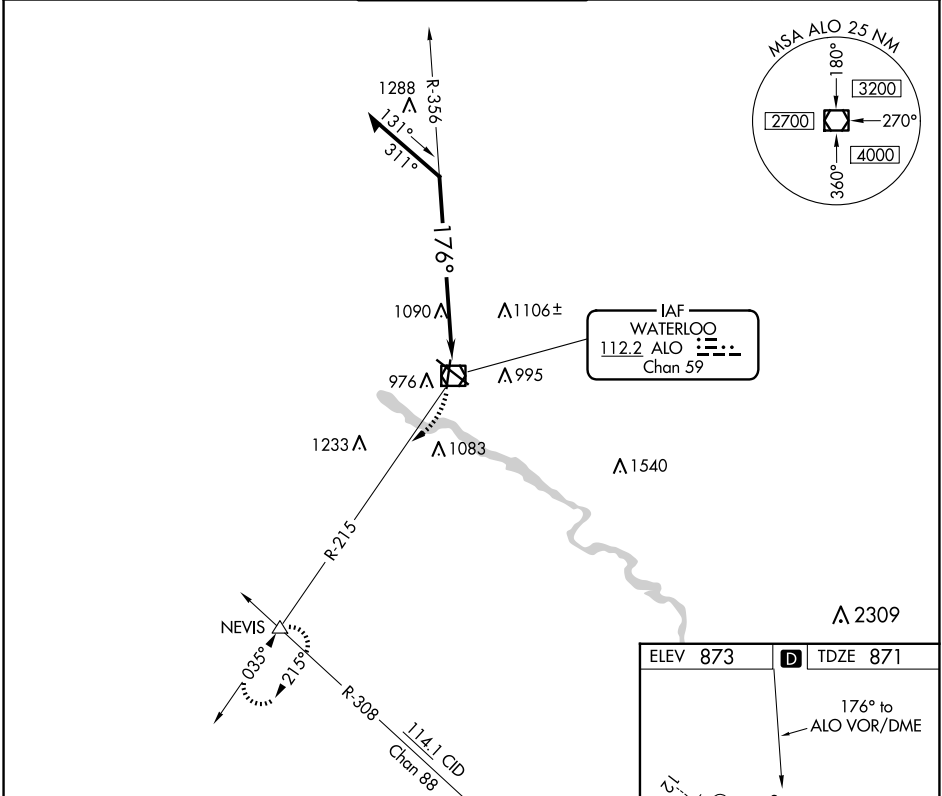
# VOR RWY 18

WATERLOO RGNL (ALO)

**⚠** Rwy 18 helicopter visibility reduction below 3/4 SM NA.

**⚠** MISSED APPROACH: Climbing right turn to 2800 on ALO VOR/DME R-215 to NEVIS INT and hold.

ATIS <b>120.65</b>	WATERLOO APP CON * <b>118.9 251.15</b>	WATERLOO TOWER * <b>125.075</b> (CTAF) <b>257.8</b>	GND CON <b>121.9 269.1</b>	UNICOM <b>122.95</b>
-----------------------	---	--	-------------------------------	-------------------------



CATEGORY	A	B	C	D
S-18	1600-1 729 (800-1)		1600-2 729 (800-2)	
<b>C</b> CIRCLING	1600-1 727 (800-1)		1600-2 727 (800-2)	1600-2 1/4 727 (800-2 1/4)

HIRL Rwy 12-30 **Ⓛ**  
MIRL Rwy 18-36 **Ⓛ**  
REIL Rwys 18 and 36

NC-3, 15 MAY 2025 to 12 JUN 2025

NC-3, 15 MAY 2025 to 12 JUN 2025