

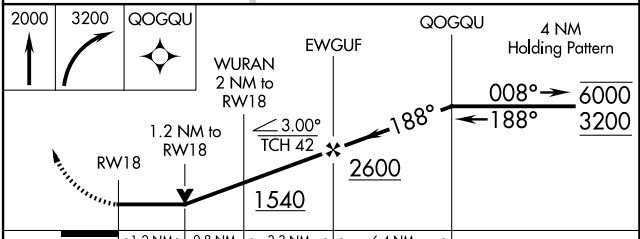
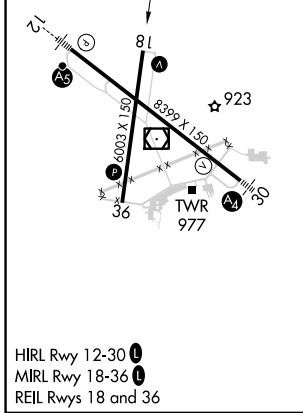
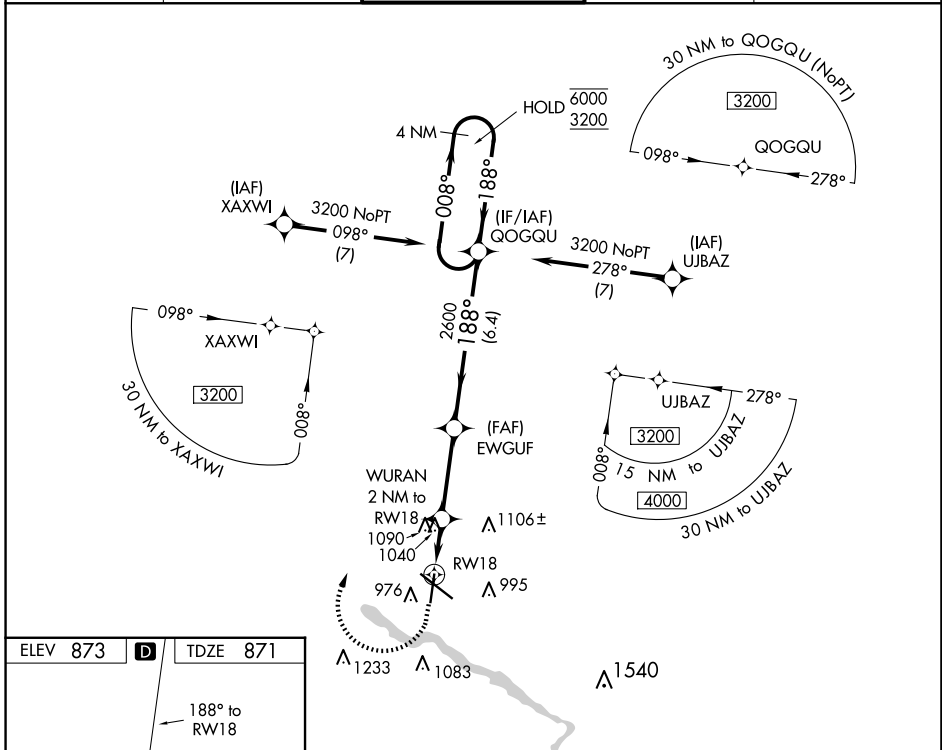
WAAS CH <b>58042</b> <b>W18A</b>	APP CRS <b>188°</b>	Rwy Idg TDZE Apt Elev	<b>6003</b> <b>871</b> <b>873</b>
--	------------------------	-----------------------------	---

# RNAV (GPS) RWY 18

WATERLOO RGNL (A.L.O)

RNP APCH.		MISSED APPROACH: Climb to 2000 then climbing right turn to 3200 direct QOGQU and hold.	
▼ ▲ Rwy 18 helicopter visibility reduction below ¼ SM NA.			

ATIS <b>120.65</b>	WATERLOO APP CON * <b>118.9 251.15</b>	WATERLOO TOWER * <b>125.075 (CTAF) 257.8</b>	GND CON <b>121.9 269.1</b>	UNICOM <b>122.95</b>
-----------------------	---	---	-------------------------------	-------------------------



CATEGORY	A	B	C	D
LP MDA	1300-1	429 (500-1)	1300-1¼ 429 (500-1¼)	
LNAV MDA	1340-1	469 (500-1)	1340-1⅜ 469 (500-1⅜)	
<b>C</b> CIRCLING	1360-1 487 (500-1)	1400-1 527 (600-1)	1480-1¾ 607 (700-1¾)	1600-2¼ 727 (800-2¼)

NC-3, 15 MAY 2025 to 12 JUN 2025

NC-3, 15 MAY 2025 to 12 JUN 2025