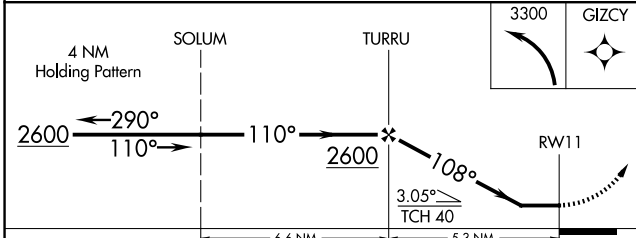
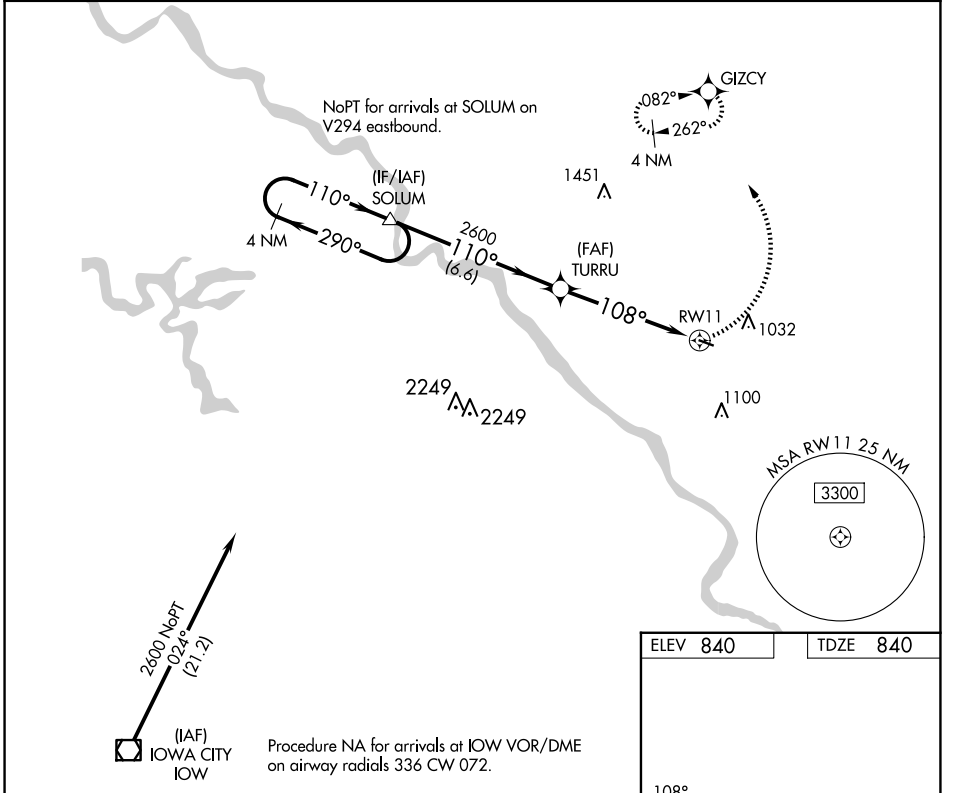


APP CRS	Rwy Idg	3000
108°	TDZE	840
	Apt Elev	840

RNAV (GPS) RWY 11

MATHEWS MEML (8C4)

<p>NA DME/DME RNP-0.3 NA. Visibility reduction by helicopters NA. Use Iowa City altimeter setting, when not received use Cedar Rapids altimeter setting.</p>	<p>MISSED APPROACH: Climbing left turn to 3300 direct GIZCY and hold.</p>
<p>CEDAR RAPIDS APP CON ★ 119.7 266.8</p>	<p>CTAF 122.9</p>



ELEV 840	TDZE 840
<p>MIRL Rwy 11-29 REIL Rwy 11</p>	

CATEGORY	A	B	C	D
RNAV MDA	1360-1	520 (600-1)		NA
CIRCLING	1460-1	620 (700-1)		NA

NC-3, 15 MAY 2025 to 12 JUN 2025

NC-3, 15 MAY 2025 to 12 JUN 2025