

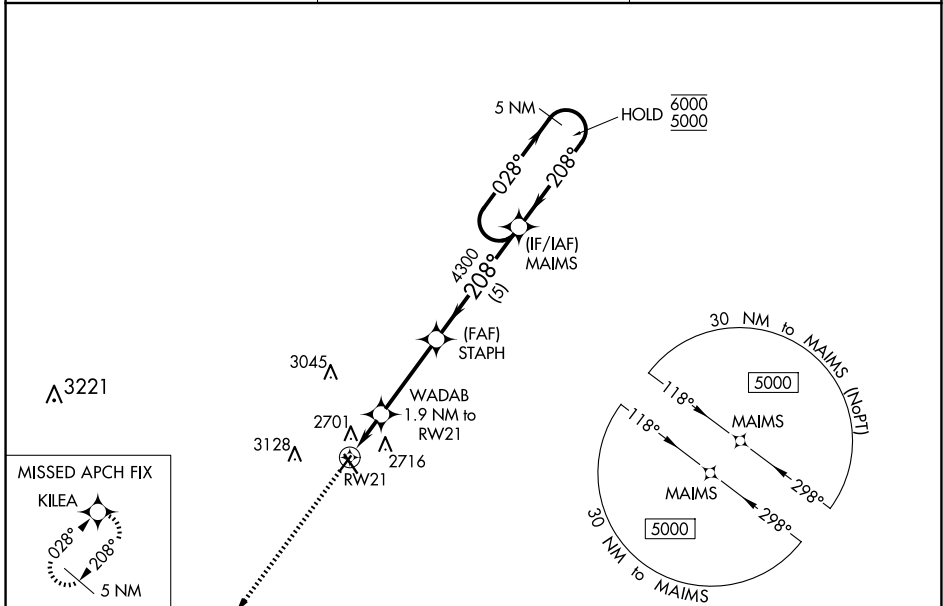
WAAS CH 97437 W21A	APP CRS 208°	Rwy Idg TDZE Apt Elev	3402 2595 2595
--	------------------------	-----------------------------	---

RNAV (GPS) RWY 21

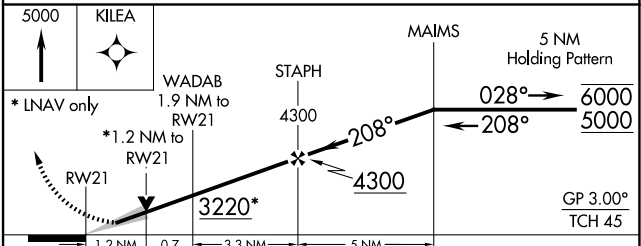
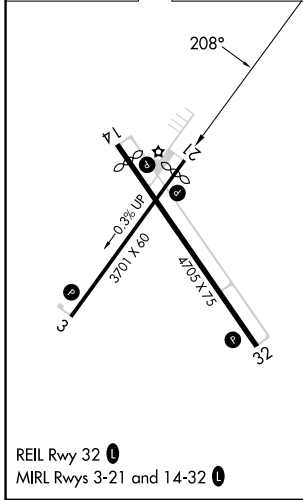
MILLER FLD (VTN)

RNP APCH.		MISSED APPROACH: Climb to 5000 direct KILEA and hold.
<p>⚠ For uncompensated Baro-VNAV systems, LNAV/VNAV NA below -24°C or above 54°C.</p>		

ASOS 118.075	DENVER CENTER 127.95 338.2	UNICOM 122.8 (CTAF) 0
------------------------	--------------------------------------	---------------------------------



ELEV 2595	TDZE 2595
-----------	-----------



CATEGORY	A	B	C	D
LPV DA	2845-1	250 (300-1)		NA
LNAV/VNAV DA	2893-1	298 (300-1)		NA
LNAV MDA	3020-1	425 (500-1)		NA
C CIRCLING	3080-1 485 (500-1)	3560-1½ 965 (1000-1½)		NA

NC-2, 15 MAY 2025 to 12 JUN 2025

NC-2, 15 MAY 2025 to 12 JUN 2025