

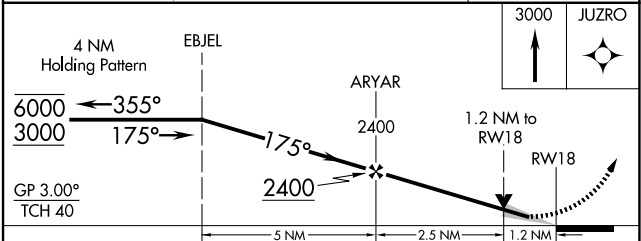
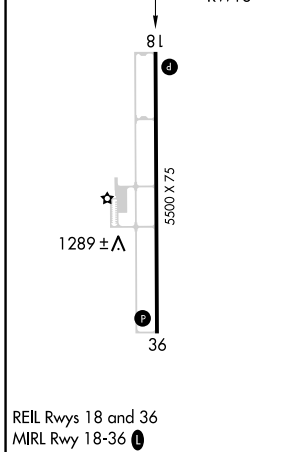
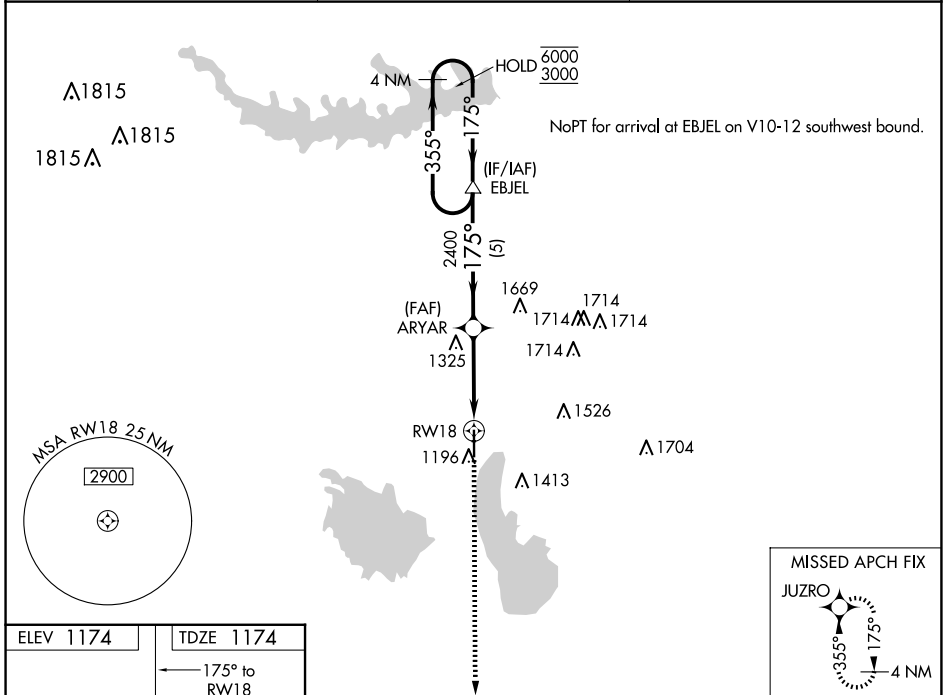
WAAS CH <b>66021</b> <b>W18A</b>	APP CRS <b>175°</b>	Rwy Idg 5500 TDZE 1174 Apt Elev 1174
--	------------------------	---

# RNAV (GPS) RWY 18

COFFEY COUNTY (UKL)

RNP APCH-GPS.	MISSED APPROACH: Climb to 3000 direct JUZRO and hold.
For uncompensated Baro-VNAV systems, LNAV/VNAV NA below -17°C or above 54°C.	

AWOS-3PT <b>121.125</b>	KANSAS CITY CENTER <b>127.725 270.25</b>	UNICOM <b>123.0 (CTAF) 0</b>
----------------------------	---	---------------------------------



CATEGORY	A	B	C	D
LPV DA	1424-1	250 (300-1)		NA
LNAV/VNAV DA	1424-1	250 (300-1)		NA
LNAV MDA	1580-1	406 (500-1)	1580-1 1/8 406 (500-1 1/8)	NA
<b>C</b> CIRCLING	1580-1 406 (500-1)	1640-1 466 (500-1)	1920-2 1/4 746 (800-2 1/4)	NA

NC-2, 15 MAY 2025 to 12 JUN 2025

NC-2, 15 MAY 2025 to 12 JUN 2025