

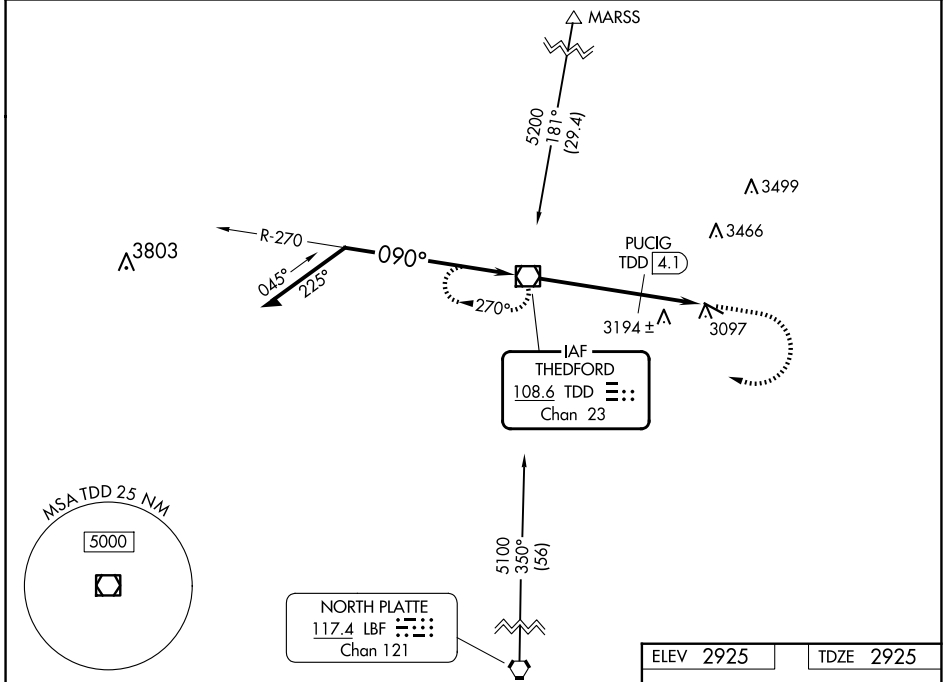
VOR/DME TDD 108.6 Chan 23	APP CRS 090°	Rwy Idg TDZE Apt Elev	4402 2925 2925
---	------------------------	-----------------------------	---

VOR RWY 11
THOMAS COUNTY (TIF')

NA Visibility reduction by helicopters NA. When local altimeter setting not received, use North Platte altimeter setting and increase all MDA 140 feet, increase S-11 Cat B and Circling Cat B visibility 1/4 mile. VDP NA when using North Platte altimeter setting.

MISSED APPROACH: Climb to 4000 then climbing right turn to 5100 direct TDD VOR/DME and hold.

AWOS-3 120.825	DENVER CENTER 127.95 338.2	CTAF 122.9
--------------------------	--------------------------------------	----------------------



NC-2, 15 MAY 2025 to 12 JUN 2025

NC-2, 15 MAY 2025 to 12 JUN 2025

ELEV 2925	TDZE 2925				
Remain within 10 NM	TDD VOR/DME				
5100	270°				
5100	090°				
*3780 when using North Platte altimeter setting.					
3640	090°				
4.1 NM	0.7				
1.6 NM					
4000	5100				
TDD					
PUCIG TDD 4.1	TDD 4.8				
TDD 4.8	TDD 6.4				
3.14°	TCH 40				
090°					
090°					
090°					
0.3% UP	4402 x 60				
CAT					
CATEGORY	A	B	C	D	
S-11	3640-1	715 (800-1)		NA	
CIRCLING	3640-1	715 (800-1)		NA	
PUCIG FIX MINIMUMS					
S-11	3500-1	575 (600-1)		NA	
CIRCLING	3500-1	575 (600-1)		NA	
MIRL Rwy 11-29					
REIL Rws 11 and 29					
FAF to MAP 6.4 NM					
Knots	60	90	120	150	180
Min:Sec	6:30	4:20	3:15	2:36	2:10