

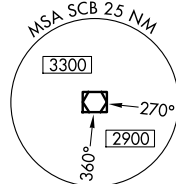
VOR/DME SCB <b>111.0</b> Chan <b>47</b>	APP CRS <b>341°</b>	Rwy Idg TDZE Apt Elev	<b>4200</b> <b>1319</b> <b>1325</b>
---	------------------------	-----------------------------	---

# VOR/DME RWY 35

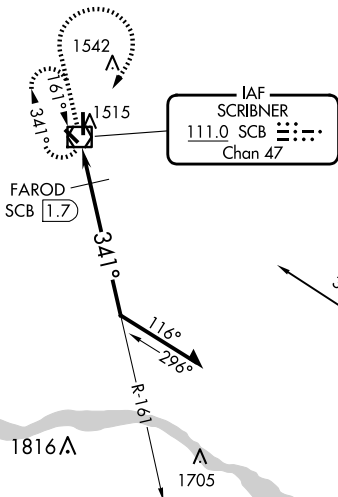
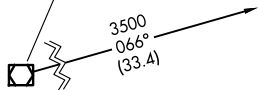
SCRIBNER STATE (SCB)

<p>NA Use Fremont altimeter setting.</p>	MISSED APPROACH: Climb to 3000 then right turn direct SCB VOR/DME and hold.
--	---

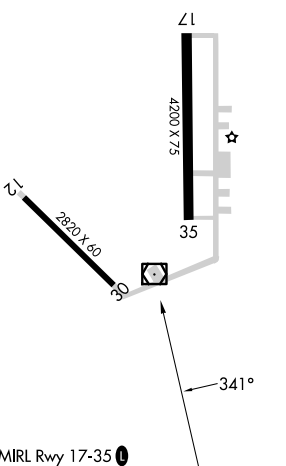
FET AWOS-3 <b>121.275</b>	OMAHA APP CON <b>135.875 354.05</b>	CTAF <b>122.9</b>
------------------------------	--	----------------------



COLUMBUS  
116.95 OLU  
Chan 116(Y)



ELEV 1325 TDZE 1319



3000	SCB	SCB VOR/DME	Remain within 10 NM
1940	FAROD SCB 1.7	161°	3000
1940	≤ 3.02° TCH 40	341°	1.7 NM

CATEGORY	A	B	C	D
S-35	1800-1	481 (500-1)	NA	
<input checked="" type="checkbox"/> CIRCLING	1900-1	575 (600-1)	NA	

NC-2, 15 MAY 2025 to 12 JUN 2025

NC-2, 15 MAY 2025 to 12 JUN 2025