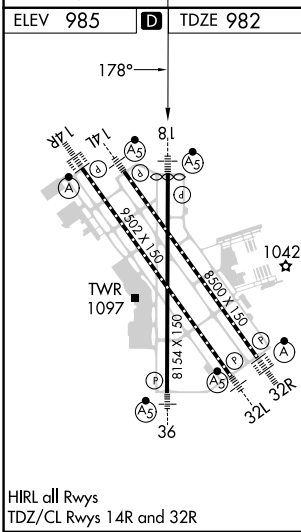
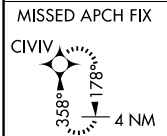
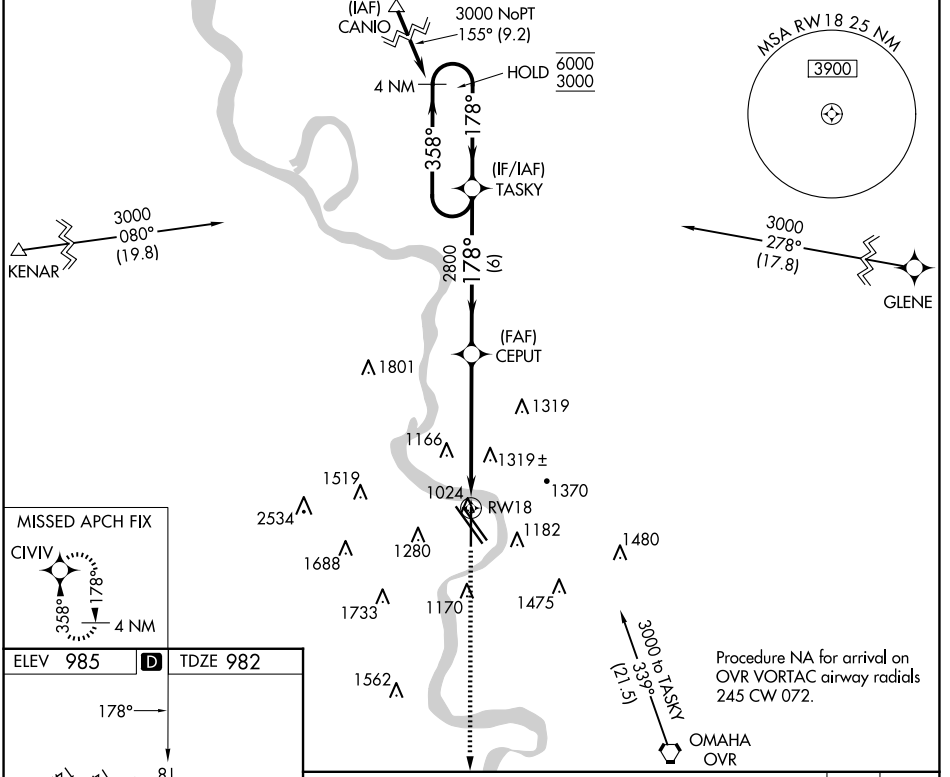


RNAV (GPS) Y RWY 18

EPPLEY AIRFIELD (OMA)

WAAS CH 65617 W18A	APP CRS 178°	Rwy Idg TDZE Apt Elev	8013 982 985
--	------------------------	-----------------------------	---

RNP APCH. ▼ For uncompensated Baro-VNAV systems, procedure NA below -19°C or above 54°C. ▲ # RVR 1800 authorized with use of FD or AP or HUD to DA.		MALSR AS	MISSED APPROACH: Climb to 3000 direct CIVIL and hold.	
D-ATIS 120.4	OMAHA APP CON 135.875 354.05	OMAHA TOWER 132.1 256.9	GND CON 121.9	CLNC DEL 119.9



4 NM Holding Pattern	TASKY	CEPUT	3000 CIVIL	
6000 ← 358°	178° →	2800	↑	
3000	178°	2800	◆	
GP 3.00°	TCH 52	* 1.5 NM to RWY 18	* LNAV only	
6 NM		4.1 NM	1.5	
CATEGORY	A	B	C	D
LPV DA#		1182/24	200 (200-½)	
LNAV/VNAV DA		1540/60	558 (600-1¼)	
LNAV MDA	1520/24	538 (600-½)	1520/55	538 (600-1)
☑ CIRCLING	1660-1 675 (700-1)	1680-1 695 (700-1)	2000-3 1015 (1100-3)	2040-3 1055 (1100-3)

NC-2, 15 MAY 2025 to 12 JUN 2025

NC-2, 15 MAY 2025 to 12 JUN 2025