

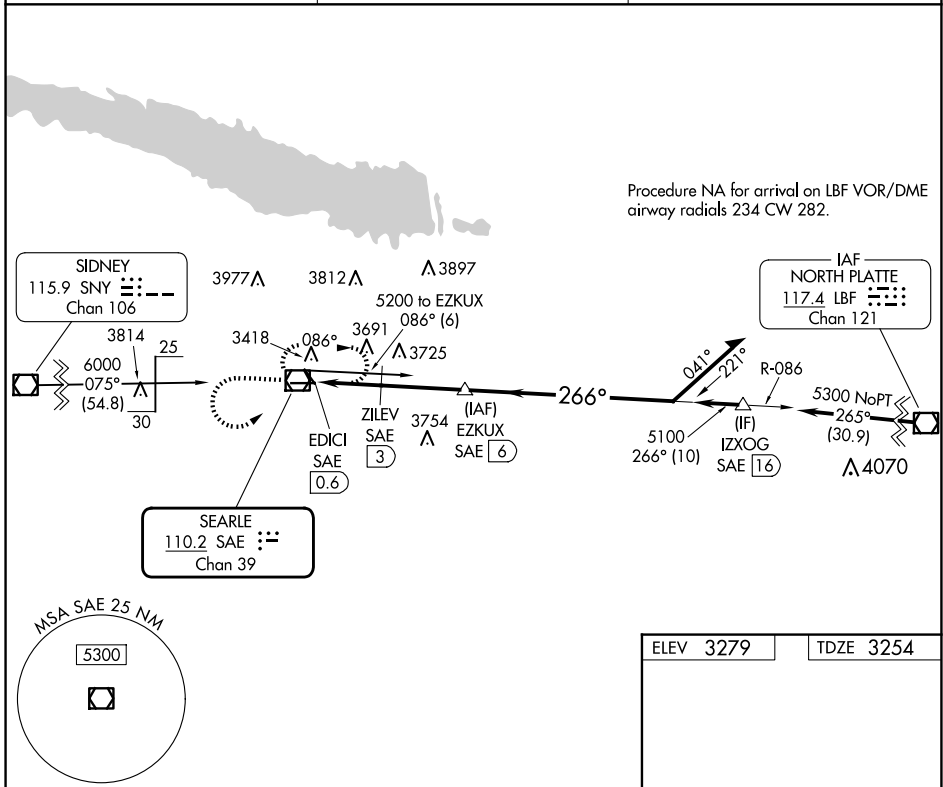
VOR/DME SAE 110.2 Chan 39	APP CRS 266°	Rwy Idg TDZE Apt Elev 5102 3254 3279
---	------------------------	--

VOR RWY 26

SEARLE FLD (OGA)

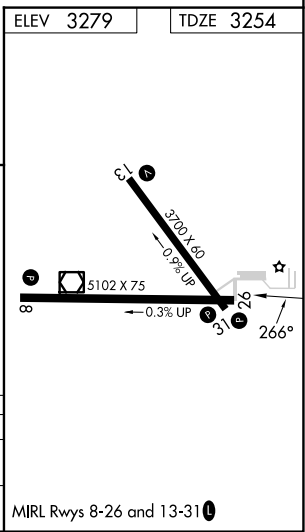
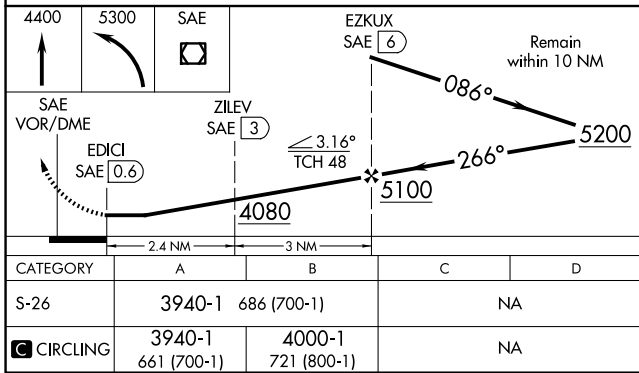
DME required. ▽ ▲	MISSED APPROACH: Climb to 4400 then climbing left turn to 5300 direct SAE VOR/DME and hold, continue climb-in-hold to 5300.
-------------------------	---

AWOS-3 121.275	DENVER CENTER 132.7 397.85	UNICOM 122.8 (CTAF) 0
--------------------------	--------------------------------------	---------------------------------



NC-2, 15 MAY 2025 to 12 JUN 2025

NC-2, 15 MAY 2025 to 12 JUN 2025



MIRL Rwy 8-26 and 13-31 0