

WAAS CH <b>57903</b> <b>W08A</b>	APP CRS <b>083°</b>	Rwy Idg TDZE Apt Elev	<b>5102</b> <b>3260</b> <b>3279</b>
--	------------------------	-----------------------------	---

# RNAV (GPS) RWY 8

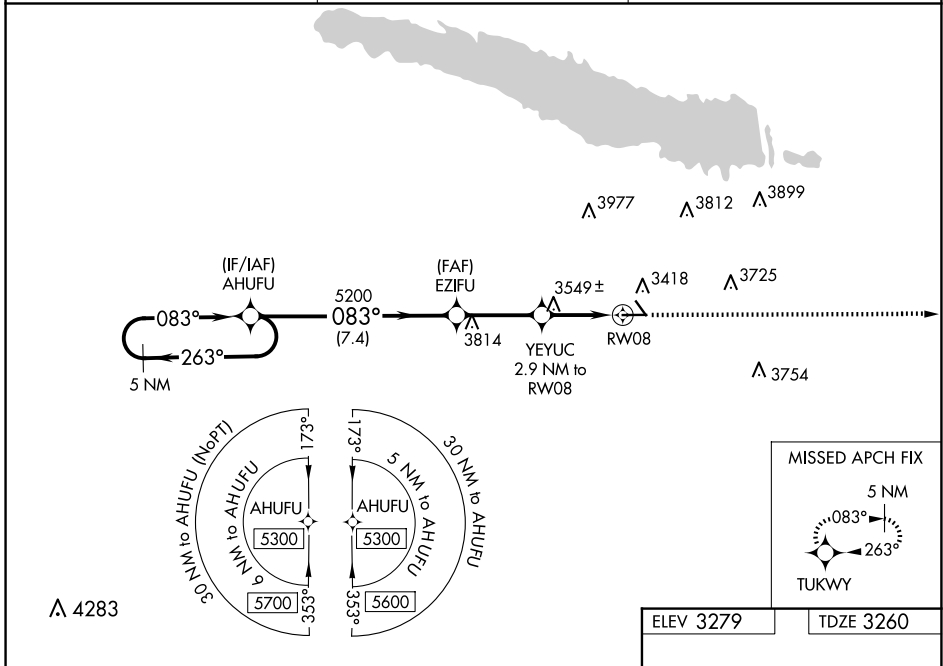
SEARLE FLD (OGA)

RNP APCH.

**▽** For uncompensated Baro-VNAV systems, LNAV/VNAV NA below -21°C or above 54°C. When local altimeter setting not received, use Imperial altimeter setting and increase all DA 86 feet and all MDA 100 feet, increase LPV all Cats visibility 1/8 SM, LNAV/VNAV all Cats and Circling Cat B visibility 1/4 SM. Baro-VNAV NA when using Imperial altimeter setting.

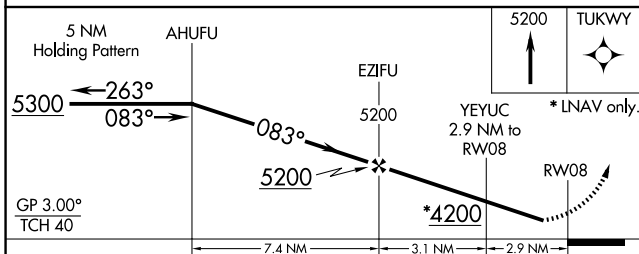
**MISSED APPROACH:**  
Climb to 5200 direct TUKWY and hold.

AWOS-3 <b>121.275</b>	DENVER CENTER <b>132.7 397.85</b>	UNICOM <b>122.8 (CTAF) 0</b>
--------------------------	--------------------------------------	---------------------------------



NC-2, 15 MAY 2025 to 12 JUN 2025

NC-2, 15 MAY 2025 to 12 JUN 2025



ELEV 3279	TDZE 3260
-----------	-----------

CATEGORY	A	B	C	D
LPV DA	3510-1	250 (300-1)		NA
LNAV/VNAV DA	3865-2¼	605 (600-2¼)		NA
LNAV MDA	3800-1	540 (600-1)		NA
CIRCLING	3940-1 661 (700-1)	4000-1 721 (800-1)		NA

