

WAAS CH 50118 W12A	APP CRS 123°	Rwy Idg TDZE Apt Elev	5698 2583 2583
--	------------------------	-----------------------------	---

RNAV (GPS) RWY 12

MC COOK BEN NELSON RGNL (MCK)

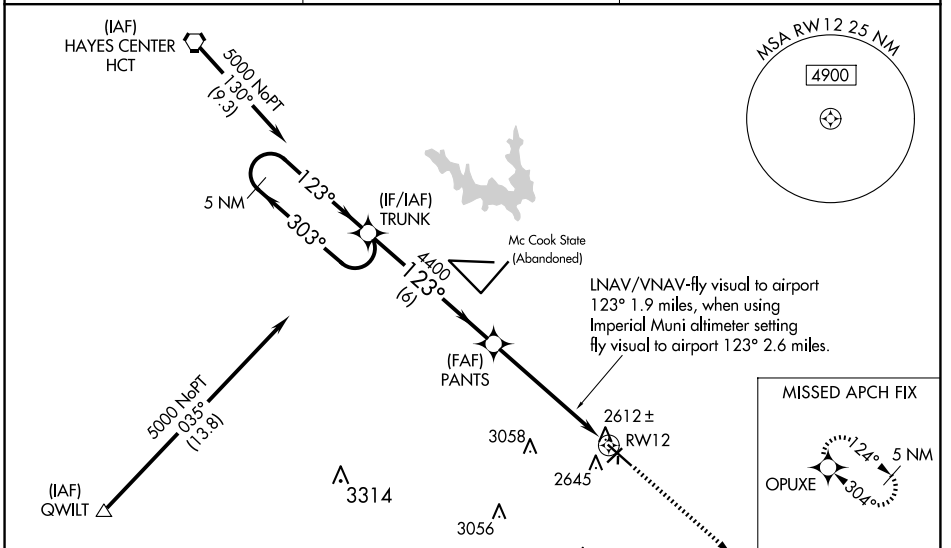
RNP APCH-GPS.

⚠ Circling NA to Rwy 17 and 35. For uncompensated Baro-VNAV systems, LNAV/VNAV NA below -20°C or above 54°C. Baro-VNAV and VDP NA when using Imperial Muni altimeter setting. For inoperative MALSR, increase LPV all Cats visibility to 1, when using Imperial Muni altimeter setting increase LPV all Cats visibility to 1 3/4 and LNAV visibility Cat A to 1. Inoperative table does not apply to LNAV/VNAV. When local altimeter setting not received, use Imperial Muni altimeter setting and increase all DAs 213 feet, and LPV all Cats visibility 3/4 mile, LNAV/VNAV Cat C visibility 1/2 mile; increase all MDAs 220 feet, and LNAV and Circling visibility Cats A and B 1/4 mile, Cat C 1 mile.

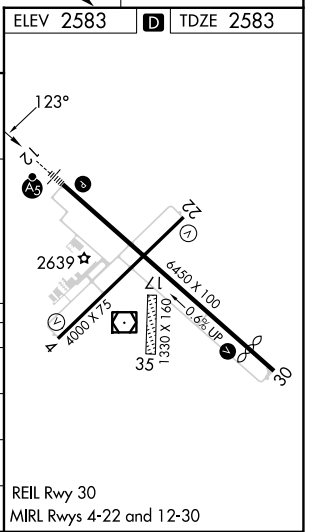
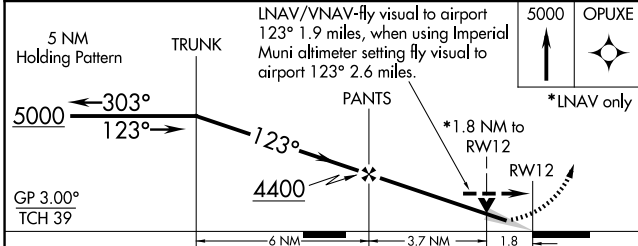
MALSR

MISSED APPROACH: Climb to 5000 direct OPUXE and hold.

ASOS 119.025	DENVER CENTER 132.7 226.675	UNICOM 122.8 (CTAF)
------------------------	---------------------------------------	-------------------------------



ELEV 2583	D TDZE 2583
-----------	--------------------



CATEGORY	A	B	C	D
LPV DA	2840-1/2	257 (300-1/2)		NA
LNAV/VNAV DA	3240-2	657 (700-2)		NA
LNAV MDA	3180-1/2	597 (600-1/2)	3180-1 597 (600-1)	NA
CIRCLING	3180-1	597 (600-1)	3360-2 1/4 777 (800-2 1/4)	NA

NC-2, 15 MAY 2025 to 12 JUN 2025

NC-2, 15 MAY 2025 to 12 JUN 2025