

WAAS CH 82020 W35A	APP CRS 352°	Rwy Idg TDZE Apt Elev	4201 2012 2012
--	------------------------	-----------------------------	---

RNAV (GPS) RWY 35

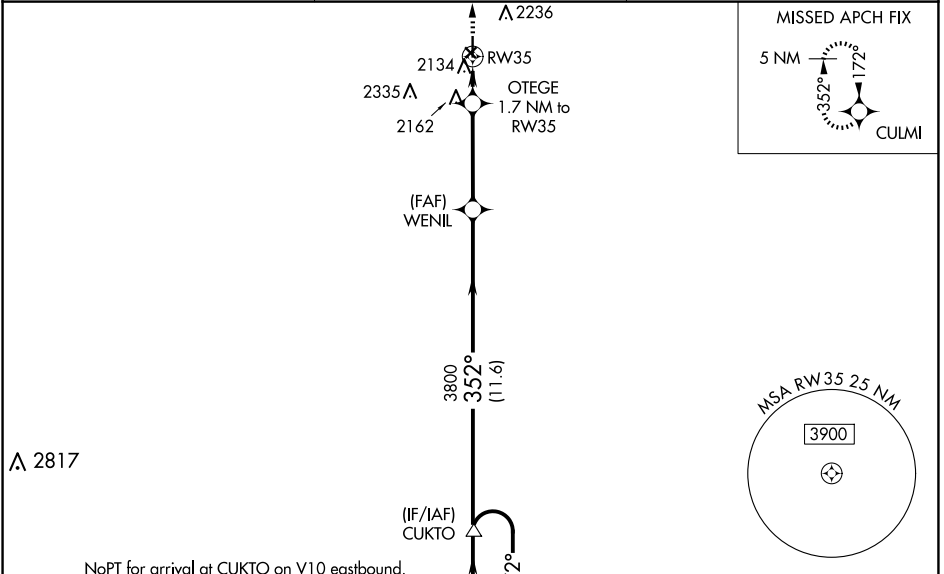
LARNED-PAWNEE COUNTY (L.Q.R.)

RNP APCH.

⚠ Baro-VNAV NA when using Great Bend altimeter setting. For uncompensated Baro-VNAV systems, LNAV/VNAV NA below -18°C or above 54°C. Rwy 35 helicopter visibility reduction below 1 SM NA. When local altimeter setting not received, use Great Bend altimeter setting and increase all DA 49 feet and LNAV/VNAV all Cats visibility 1/8 SM; increase all MDA 60 feet and increase LNAV Cat C and Circling Cat C visibility 1/4 SM. Circling NA to Rwys 4, 12, 22 and 30. Procedure NA at night.

⚠ MISSED APPROACH: Climb to 4500 direct CULMI and hold.

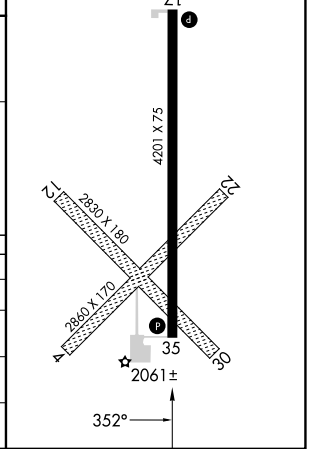
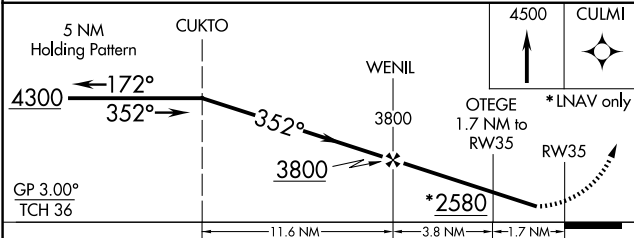
AWOS-2 119.875	KANSAS CITY CENTER 124.4 322.4	UNICOM 122.8 (CTAF) 0
--------------------------	--	---------------------------------



⚠ 2817

NoPT for arrival at CUKTO on V10 eastbound.

ELEV 2012	TDZE 2012
REIL Rwys 17 and 35 0	
MIRL Rwy 17-35 0	



CATEGORY	A	B	C	D
LPV DA	2262-1	250 (300-1)		NA
LNAV/VNAV DA	2337-1 1/8	325 (400-1 1/8)		NA
LNAV MDA	2420-1	408 (500-1)	2420-1 1/2 408 (500-1 1/2)	NA
CIRCLING	2500-1 488 (500-1)	2600-1 588 (600-1)	2640-1 3/4 628 (700-1 3/4)	NA

NC-2, 15 MAY 2025 to 12 JUN 2025

NC-2, 15 MAY 2025 to 12 JUN 2025