

APP CRS	Rwy Idg	4201
172°	TDZE	2009
	Apt Elev	2012

RNAV (GPS) RWY 17

LARNED-PAWNEE COUNTY (LQR)

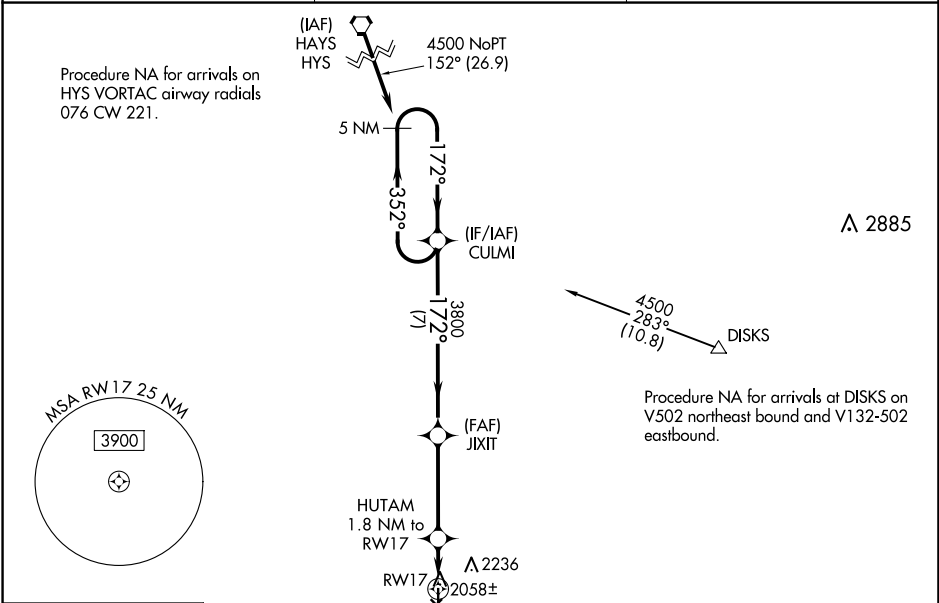
⚠ DME/DME RNP-0.3 NA. Procedure NA at night. Visibility reduction by helicopters NA. When local altimeter setting not received, use Great Bend altimeter setting: increase all MDA 60 feet and Circling Cat C visibility ¼ mile. Circling NA to Rwy's 4, 12, 22 and 30.

⚠ MISSED APPROACH: Climb to 4300 direct CUKTO and hold.

AWOS-2
119.875

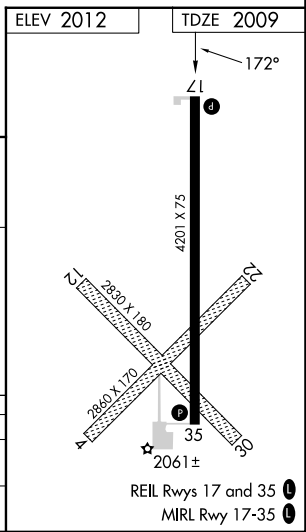
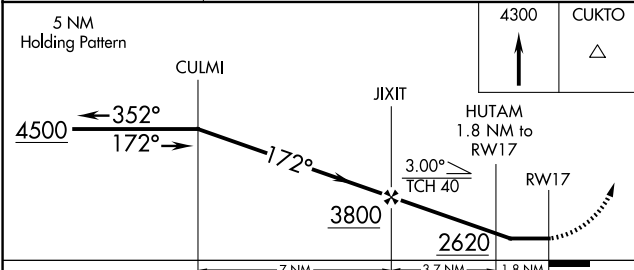
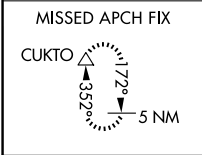
KANSAS CITY CENTER
124.4 322.4

UNICOM
122.8 (CTAF)



NC-2, 15 MAY 2025 to 12 JUN 2025

NC-2, 15 MAY 2025 to 12 JUN 2025



CATEGORY	A	B	C	D
LNVA MDA	2320-1 311 (400-1)			NA
CIRCLING	2500-1 488 (500-1)	2600-1 588 (600-1)	2640-1¾ 628 (700-1¾)	NA