

WAAS CH <b>40137</b> <b>W17A</b>	APP CRS <b>177°</b>	Rwy Idg <b>5400</b>
		TDZE <b>1219</b>
		Apt Elev <b>1219</b>

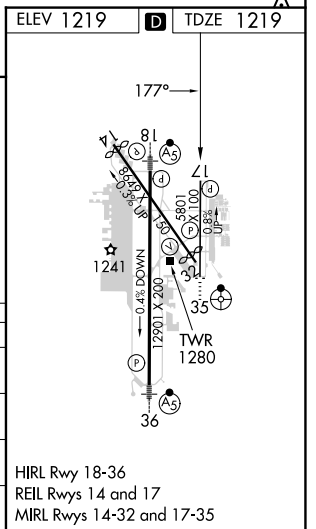
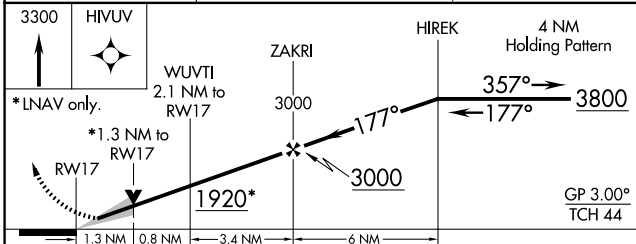
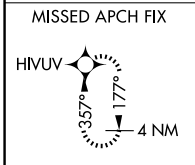
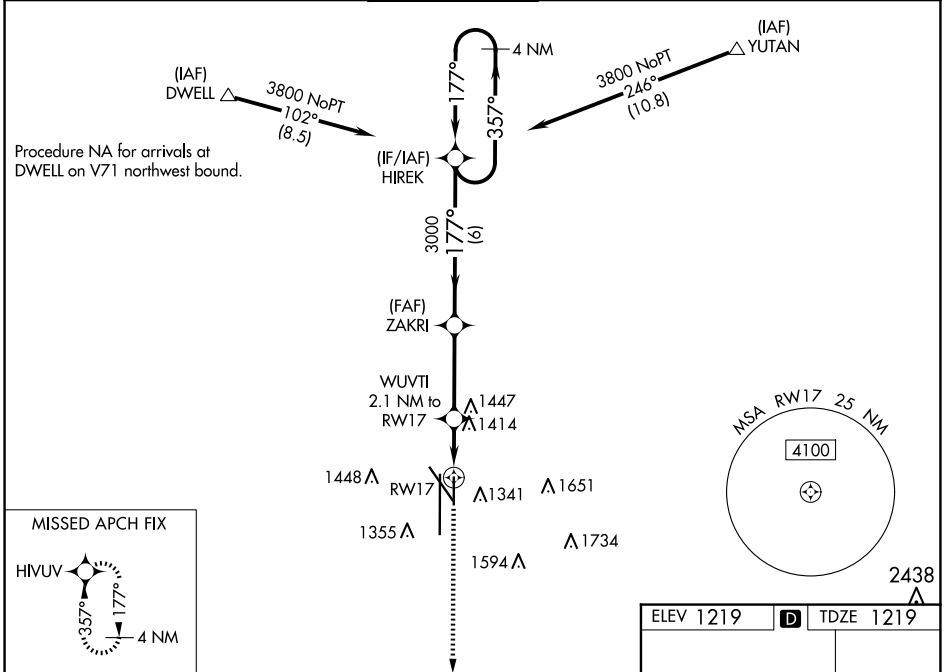
# RNAV (GPS) RWY 17

LINCOLN (LNK)

**⚠** Baro-VNAV NA when using Beatrice altimeter setting. For uncompensated Baro-VNAV systems, LNAV/VNAV NA below -22°C (-7°F) or above 54°C (130°F). DME/DME RNP-0.3 NA. When local altimeter setting not received, use Beatrice altimeter setting and increase all DA 91 feet, and all MDA 100 feet, increase LPV and LNAV/VNAV all Cats visibility ¼ mile, increase LNAV Cats C/D and Circling Cats C/D visibility ¼ mile.

**⚠** MISSED APPROACH: Climb to 3300 direct HIVUV and hold.

ATIS <b>118.05 290.9</b>	OMAHA APP CON <b>124.0 270.3</b>	LINCOLN TOWER* <b>118.5 (CTAF) 253.5</b>	GND CON <b>121.9 275.8</b>	CLNC DEL <b>120.7 225.4</b>	UNICOM <b>122.95</b>
-----------------------------	-------------------------------------	---------------------------------------------	-------------------------------	--------------------------------	-------------------------



CATEGORY	A	B	C	D
LPV DA		1419-3/4	200 (200-3/4)	
LNAV/VNAV DA		1615-13/8	396 (400-13/8)	
LNAV MDA	1680-1	461 (500-1)	1680-13/8	461 (500-13/8)
CIRCLING	1680-1 461 (500-1)	1760-1 541 (600-1)	1820-13/4 601 (700-13/4)	1960-21/2 741 (800-21/2)

HIRL Rwy 18-36  
REIL Rwy 14 and 17  
MIRL Rwy 14-32 and 17-35

NC-2, 15 MAY 2025 to 12 JUN 2025

NC-2, 15 MAY 2025 to 12 JUN 2025