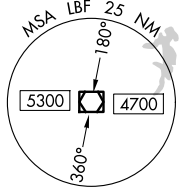
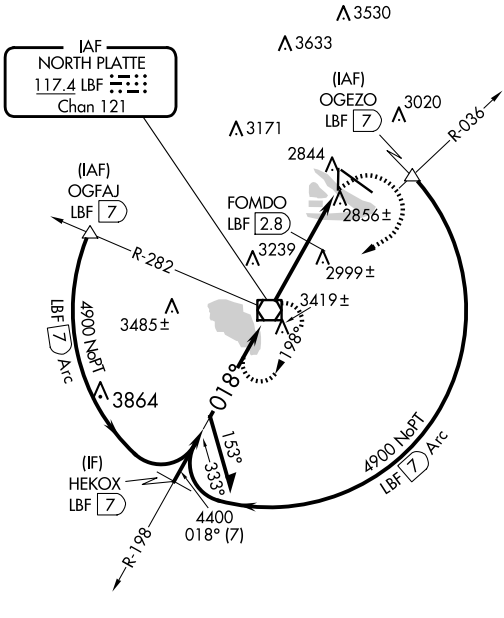


VOR/DME LBF <b>117.4</b> Chan <b>121</b>	APP CRS <b>018°</b>	Rwy Idg <b>4135</b> TDZE <b>2777</b> Apt Elev <b>2777</b>
--	------------------------	---

# VOR RWY 35

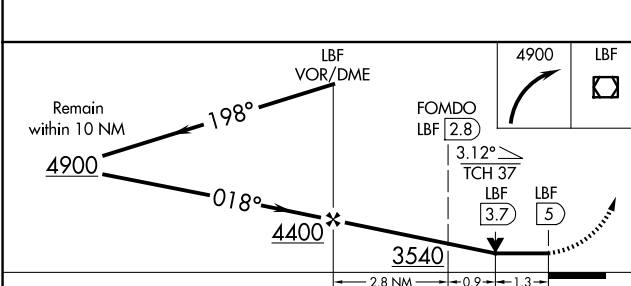
NORTH PLATTE RGNL/LEE BIRD FLD (L.B.F)

<p><b>▽</b> Rwy 35 helicopter visibility reduction below 3/4 SM NA.</p>		<p><b>▲</b> MISSED APPROACH: Climbing right turn to 4900 direct LBF VOR/DME and hold, continue climb-in-hold to 4900.</p>	
ASOS <b>118.425</b>	DENVER CENTER <b>132.7 226.675</b>	CLNC DEL <b>132.7</b>	UNICOM <b>123.0 (CTAF) 0</b>



NC-2, 15 MAY 2025 to 12 JUN 2025

NC-2, 15 MAY 2025 to 12 JUN 2025



ELEV 2777	<b>D</b>	TDZE 2777
-----------	----------	-----------

HIRL Rwy 12-30 **0**  
REIL Rwy 35 **0**  
MIRL Rwy 17-35 **0**

FAF to MAP 5 NM					
Knots	60	90	120	150	180
Min:Sec	5:00	3:20	2:30	2:00	1:40

CATEGORY	A	B	C	D
S-35	3540-1 763 (800-1)	3540-1¼ 763 (800-1¼)	3540-2¼ 763 (800-2¼)	3540-2½ 763 (800-2½)
<b>C</b> CIRCLING	3540-1 763 (800-1)	3540-1¼ 763 (800-1¼)	3540-2¼ 763 (800-2¼)	3560-2½ 783 (800-2½)
FOMDO FIX MINIMUMS				
S-35	3220-1	443 (500-1)	3220-1¼ 443 (500-1¼)	3220-1½ 443 (500-1½)
<b>C</b> CIRCLING	3280-1 503 (600-1)	3340-1 563 (600-1)	3420-1¾ 643 (700-1¾)	3560-2½ 783 (800-2½)