

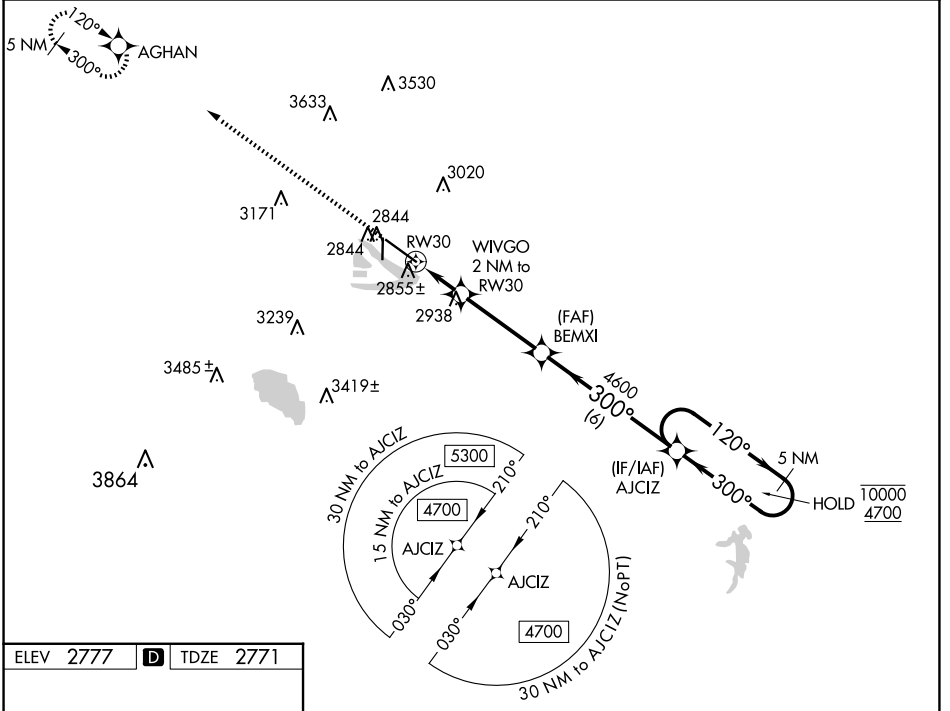
WAAS CH <b>60915</b> <b>W30A</b>	APP CRS <b>300°</b>	Rwy Idg TDZE Apt Elev	<b>8001</b> <b>2771</b> <b>2777</b>
--	------------------------	-----------------------------	---

# RNAV (GPS) RWY 30

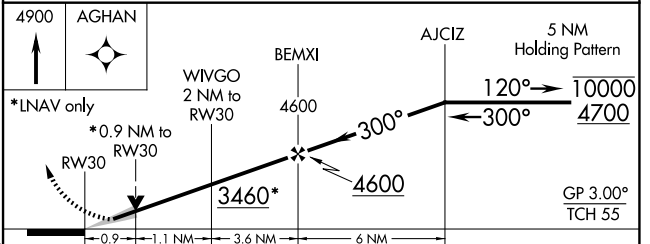
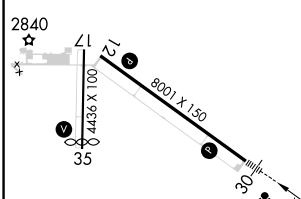
NORTH PLATTE RGNL/LEE BIRD FLD (L.B.F.)

RNP APCH-GPS. ▼ ▲ For uncompensated Baro-VNAV systems, LNAV/VNAV NA below -23°C or above 52°C.	MALSR ▲	MISSED APPROACH: Climb to 4900 direct AGHAN and hold.
--	------------	---

ASOS <b>118.425</b>	DENVER CENTER <b>132.7 226.675</b>	CLNC DEL <b>132.7</b>	UNICOM <b>123.0 (CTAF) 0</b>
------------------------	---------------------------------------	--------------------------	---------------------------------



ELEV 2777	<b>D</b>	TDZE 2771
-----------	----------	-----------



CATEGORY	A	B	C	D
LPV DA		2971-½	200 (200-½)	
LNAV/VNAV DA		3022-½	251 (300-½)	
LNAV MDA	3120-½	349 (400-½)	3120-⅝	349 (400-⅝)
<b>C</b> CIRCLING	3280-1 503 (600-1)	3340-1 563 (600-1)	3420-1¾ 643 (700-1¾)	3560-2½ 783 (800-2½)

- HIRL Rwy 12-30
- REIL Rwy 35
- MIRL Rwy 17-35

NC-2, 15 MAY 2025 to 12 JUN 2025

NC-2, 15 MAY 2025 to 12 JUN 2025