

APP CRS	Rwy Idg	<b>5501</b>
<b>189°</b>	TDZE	<b>1016</b>
	Apt Elev	<b>1016</b>

# RNAV (GPS) RWY 19

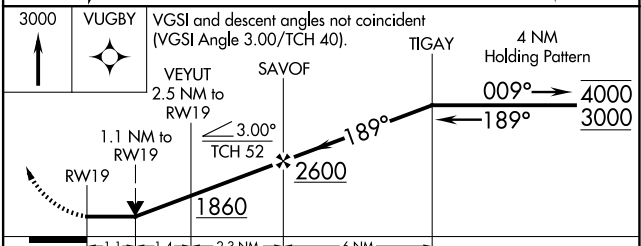
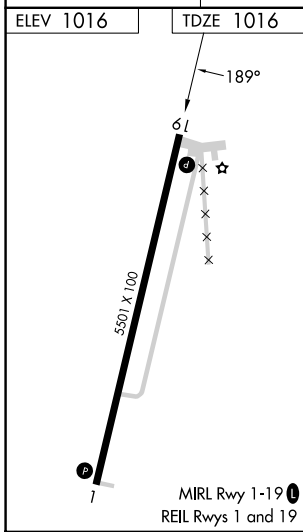
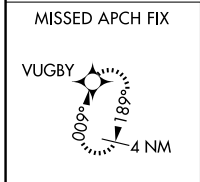
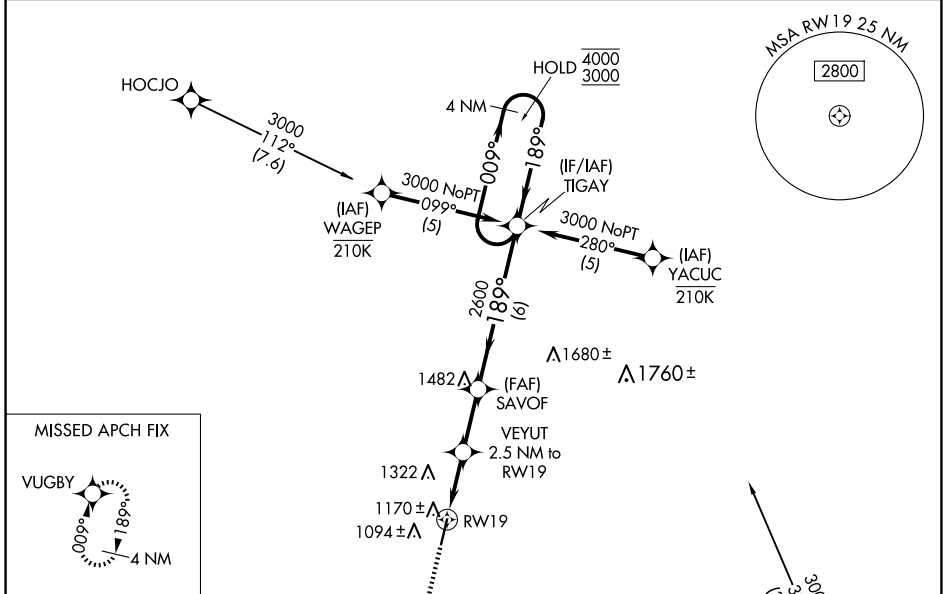
ALLEN COUNTY (K88)

RNP APCH - GPS.

**⚠** Rwy 19 helicopter visibility reduction below 3/4 SM NA. When local altimeter setting not received, use Chanute altimeter setting; increase all MDAs 40 feet and LNAV visibility Cat C 1/2 SM and Circling visibility Cat C 1/4 SM. VDP NA when using Chanute altimeter setting.

MISSED APPROACH: Climb to 3000 direct VUGBY and hold.

AWOS-3PT <b>128.325</b>	KANSAS CITY CENTER <b>127.725 270.25</b>	UNICOM <b>122.8 (CTAF) 0</b>
----------------------------	---	---------------------------------



CATEGORY	A	B	C	D
LNAV MDA	1420-1	404 (500-1)	1420-1 1/8 404 (500-1 1/8)	NA
CIRCLING	1480-1 464 (500-1)	1660-1 644 (700-1)	1660-1 3/4 644 (700-1 3/4)	NA

NC-2, 15 MAY 2025 to 12 JUN 2025

NC-2, 15 MAY 2025 to 12 JUN 2025