

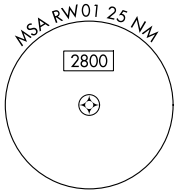
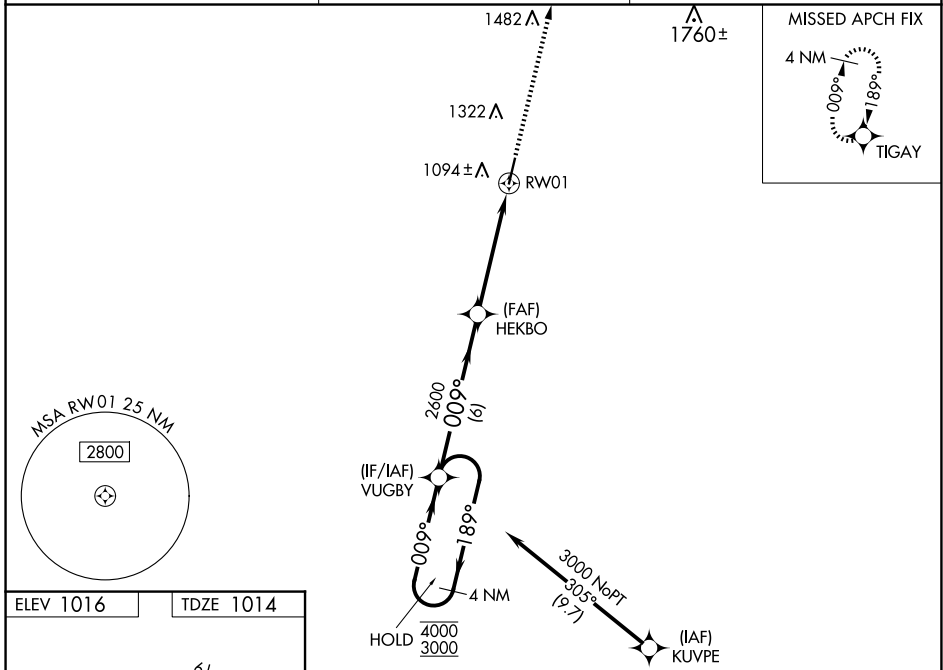
WAAS CH <b>86628</b> <b>W01A</b>	APP CRS <b>009°</b>	Rwy Idg TDZE Apt Elev	<b>5501</b> <b>1014</b> <b>1016</b>
--	------------------------	-----------------------------	---

# RNAV (GPS) RWY 1

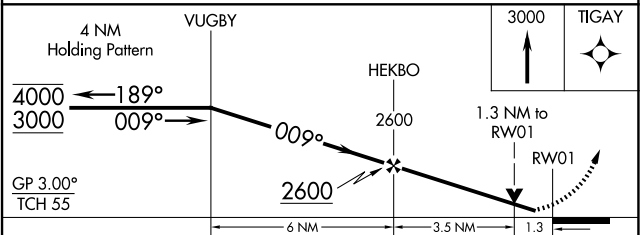
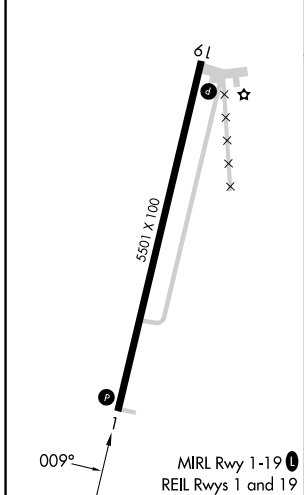
ALLEN COUNTY (K88)

RNP APCH - GPS.	<p>MISSED APPROACH: Climb to 3000 direct TIGAY and hold.</p>
<p>Baro-VNAV and VDP NA when using Chanute altimeter setting. For uncompensated Baro-VNAV systems, LNAV/VNAV NA below -17°C or above 54°C. Rwy 1 helicopter visibility reduction below 3/4 SM NA. When local altimeter setting not received, use Chanute altimeter setting: increase LPV DA to 1299 feet; increase LNAV/VNAV DA to 1324 feet; increase all MDAS 40 feet and visibility Circling Cat C 1/4 SM.</p>	

AWOS-3PT <b>128.325</b>	KANSAS CITY CENTER <b>127.725 270.25</b>	UNICOM <b>122.8 (CTAF) 0</b>
----------------------------	---	---------------------------------



ELEV 1016	TDZE 1014
-----------	-----------



CATEGORY	A	B	C	D
LPV DA		1264-1	250 (300-1)	NA
LNAV/VNAV DA		1289-1	275 (300-1)	NA
LNAV MDA	1480-1	466 (500-1)	1480-1 3/8 466 (500-1 3/8)	NA
CIRCLING	1480-1 464 (500-1)	1660-1 644 (700-1)	1660-1 3/4 644 (700-1 3/4)	NA

NC-2, 15 MAY 2025 to 12 JUN 2025

NC-2, 15 MAY 2025 to 12 JUN 2025