

WICHITA, KANSAS

RNAV (GPS) RWY 19L

23362

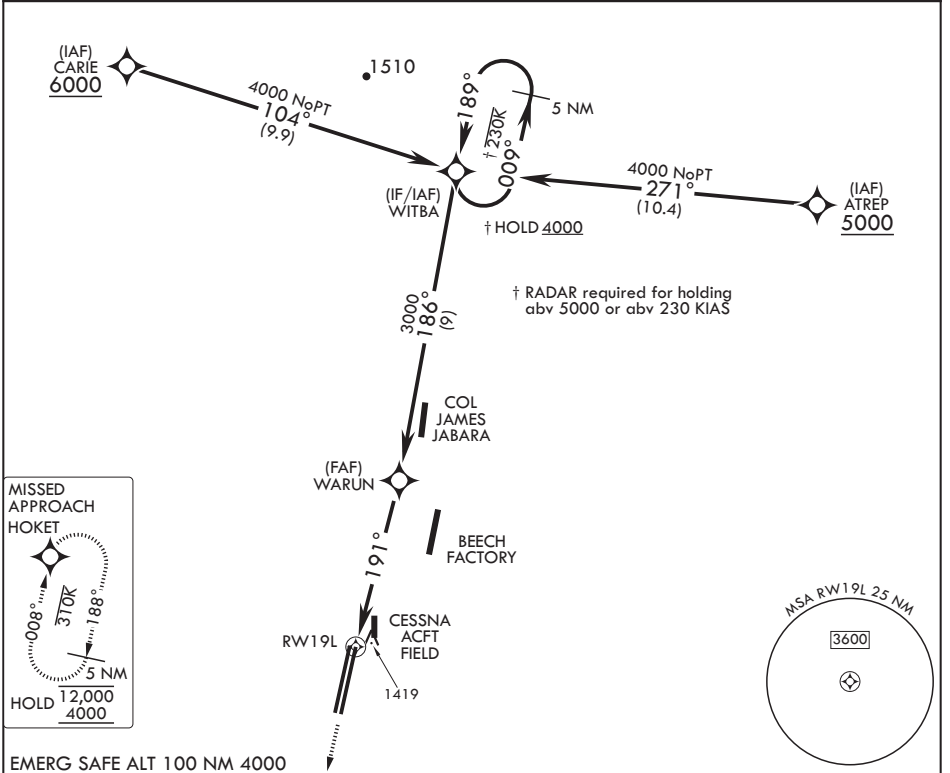
APCH CRS 191°	Rwy Idg TDZE Arpt Elev 12,007 1365 1372
-------------------------	---

- (USAF)

MC CONNELL AFB (KIAB)

DME/DME RNP-0.3 NA	ALSF-1	MISSED APPROACH: Climbing left turn to 4000 direct HOKET and hold.
<p>▼ * When ALS inop, increase CAT AB RVR to 55, vis to 1 mile; CAT CDE vis to 1 1/4 miles.</p> <p>** Circling NA west of Rwy 1L-19R.</p>		

D-ATIS 124.65 269.9	WICHITA APP CON 134.8 269.1	TOWER 127.25 291.775	GND CON 118.0 275.8
-------------------------------	---------------------------------------	--------------------------------	-------------------------------



EMERG SAFE ALT 100 NM 4000

4000 HOKET	5 NM Holding Pattern					ELEV 1372	TDZE 1365
CATEGORY	A	B	C	D	E		
LNAV MDA*	1800/40		435	(500-3/4)			
CIRCLING**	1900-1 528 (600-1)		1900-1 1/2 528 (600-1 1/2)	2400-3 1028 (1100-3)			

WICHITA, KANSAS
Amdt 6 28DEC23

37°37'N - 97°16'W

MC CONNELL AFB (KIAB)

RNAV (GPS) RWY 19L

NC-2, 18 APR 2024 to 16 MAY 2024

NC-2, 18 APR 2024 to 16 MAY 2024