

VORTAC HYS <b>110.4</b> Chan 41	APP CRS <b>332°</b>	Rwy Idg TDZE Apt Elev	<b>6501</b> <b>1994</b> <b>1999</b>
---------------------------------------	------------------------	-----------------------------	---

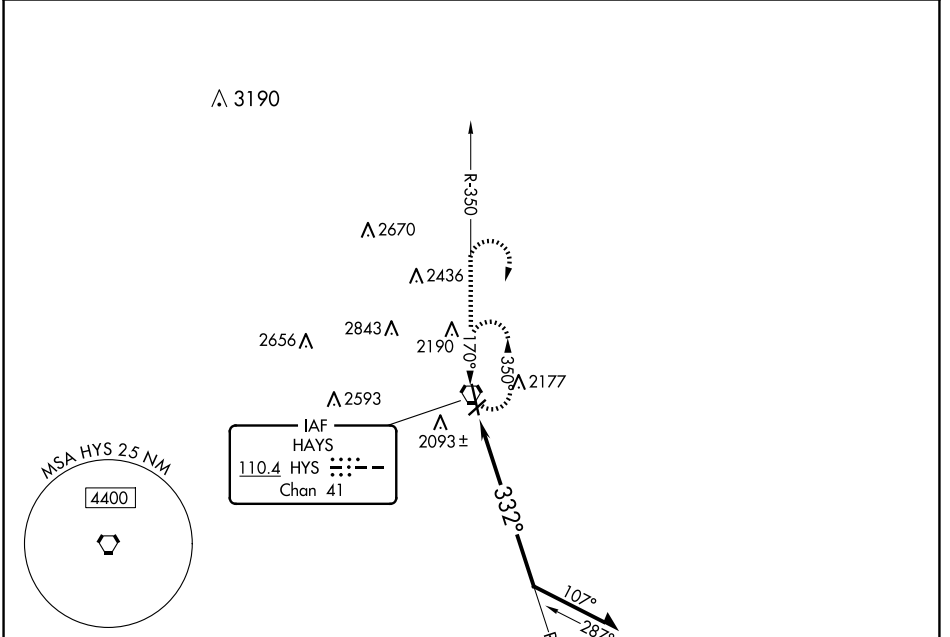
# VOR RWY 34

HAYS RGNL (HYS)

⚠ When local altimeter setting not received, use Russell altimeter setting: increase all MDA 80 feet and visibility S-34 and Circling Cat C and D ¼ SM. Circling NA for Cat D northwest of Rwy 4 and west of Rwy 16. VDP NA with Russell altimeter setting.

MALSRL  
MISSED APPROACH: Climb to 3800 via HYS R-350 then climbing right turn to 3900 direct HYS VORTAC and hold.

AWOS-3PT <b>125.525</b>	KANSAS CITY CENTER <b>124.4 322.4</b>	UNICOM <b>122.8 (CTAF)</b>
----------------------------	--	-------------------------------

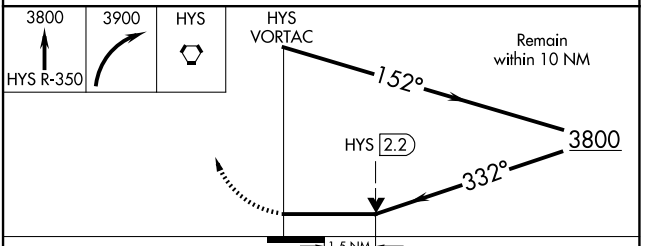
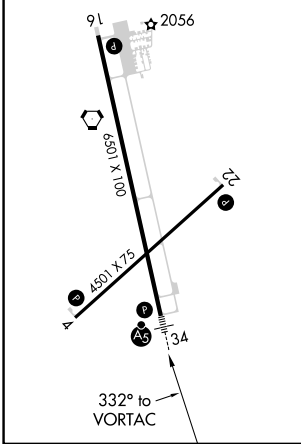


NC-2, 15 MAY 2025 to 12 JUN 2025

NC-2, 15 MAY 2025 to 12 JUN 2025

ELEV 1999	<b>D</b>	TDZE 1994
-----------	----------	-----------

MIRL Rwy 4-22 and 16-34  
REIL Rwy 4, 22 and 16



CATEGORY	A	B	C	D
S-34	2480-½	486 (500-½)	2480-¾ 486 (500-¾)	2480-1 486 (500-1)
CIRCLING	2480-1	481 (500-1)	2560-1½ 561 (600-1½)	2680-2¼ 681 (700-2¼)