


VOR/DME GRI	APP CRS	Rwy Idg	7002
116.55	353°	TDZE	1847
Chan 112(Y)		Apt Elev	1847

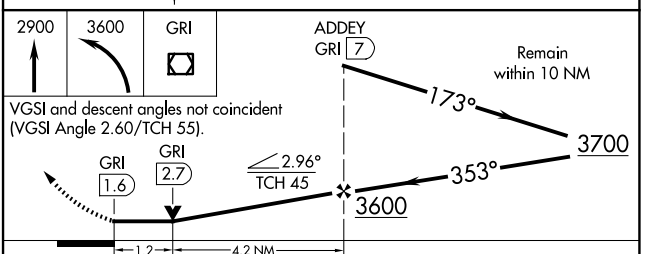
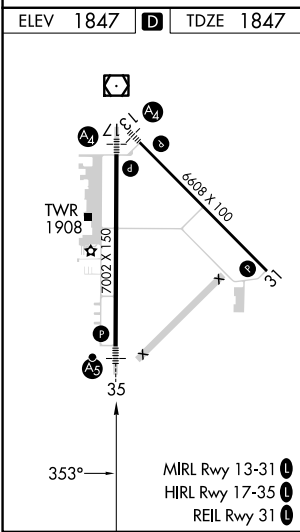
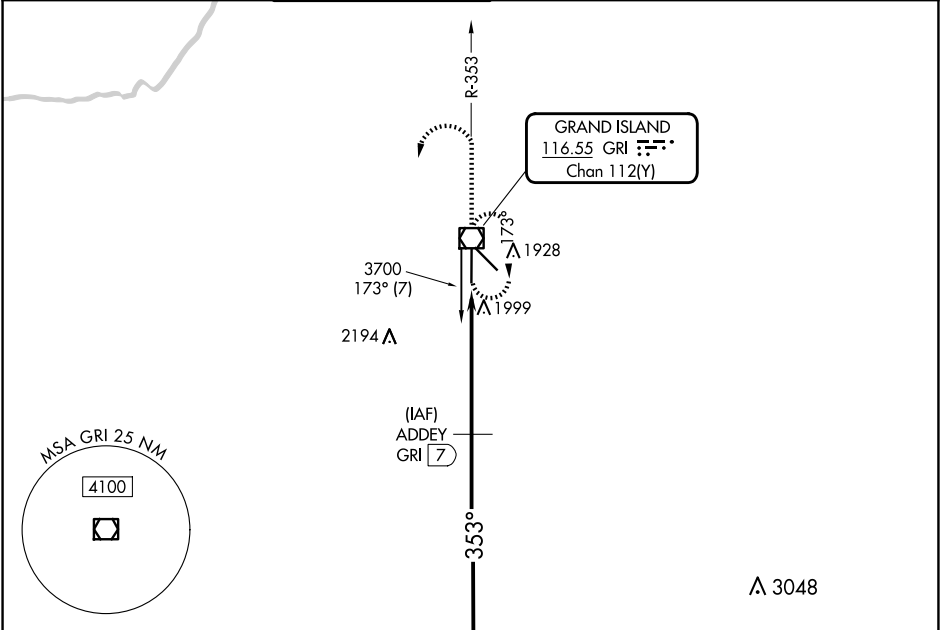
VOR/DME RWY 35

CENTRAL NEBRASKA RGNL (GRI)

V VDP NA when using Aurora altimeter setting. When local altimeter setting not received, use Aurora altimeter setting and increase all MDA 60 feet, increase Circling C/D visibility ¼ SM. For inop MALSRL, increase S-35 Cat D visibility to ¼ mile.

MALSRL  MISSED APPROACH: Climb to 2900, then climbing left turn to 3600 direct GRI VOR/DME and hold.

ATIS	MINNEAPOLIS CENTER	GRAND ISLAND TOWER*	GND CON	CLNC DEL	CLNC DEL	UNICOM
127.4	119.4 278.8	118.2 (CTAF) 259.3	121.9 259.3	121.9	126.05 (when twr closed)	122.95



CATEGORY	A	B	C	D
S-35	2260-½ 413 (500-½)		2260-¾ 413 (500-¾)	2260-1 413 (500-1)
CIRCLING	2300-1	453 (500-1)	2400-1½ 553 (600-1½)	2560-2¼ 713 (800-2¼)

NC-2, 15 MAY 2025 to 12 JUN 2025

NC-2, 15 MAY 2025 to 12 JUN 2025