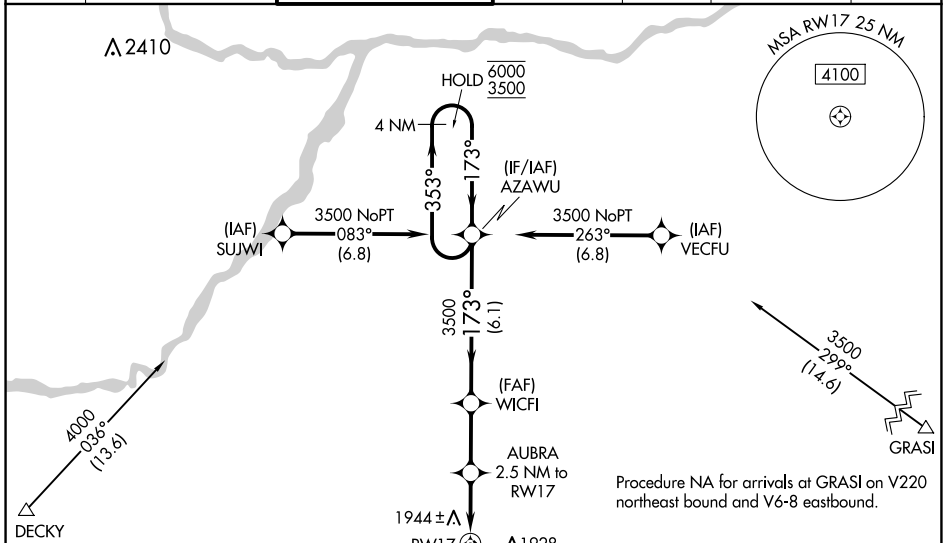


|  |                        |   |             |
|--|------------------------|---|-------------|
| WAAS<br>CH <b>60999</b><br><b>W17A</b> | APP CRS<br><b>173°</b> | Rwy Idg<br>TDZE <b>1844</b><br>Apt Elev <b>1847</b> | <b>7002</b> |
|--|------------------------|---|-------------|

# RNAV (GPS) RWY 17

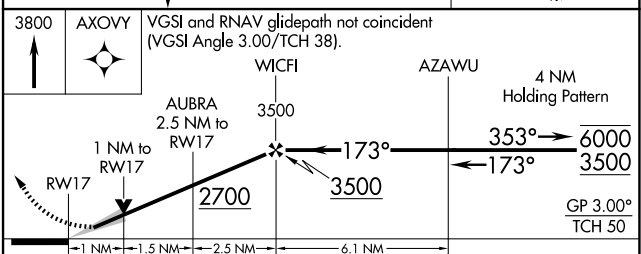
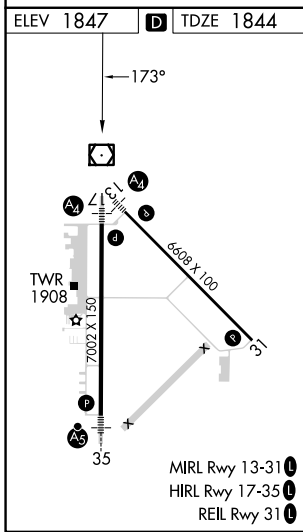
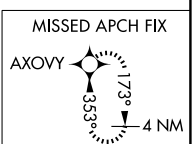
CENTRAL NEBRASKA RGNL (G.R.I)

|   |  |   |                               |   |  |                         |
|---|--|---|-------------------------------|---|--|-------------------------|
| RNP APCH - GPS.   |  | MALSP   |                               | MISSED APPROACH: Climb to 3800 direct AXOVY and hold. |  |                         |
| <p>⚠ Inop table does not apply to LPV. For uncompensated Baro-VNAV systems, LNAV/VNAV NA below -23°C or above 54°C. For inop ALS, increase LNAV/VNAV all Cats visibility to ½ SM.</p> |  | <p>⚠</p>  |                               |   |  |                         |
| ATIS<br><b>127.4</b>  | MINNEAPOLIS CENTER<br><b>119.4 278.8</b> | GRAND ISLAND TOWER *<br><b>118.2 (CTAF) 0 259.3</b> | GND CON<br><b>121.9 259.3</b> | CLNC DEL<br><b>121.9</b>                              | CLNC DEL<br><b>126.05</b><br>(when twr closed) | UNICOM<br><b>122.95</b> |



Procedure NA for arrivals at DECKY on V6 westbound.

Procedure NA for arrivals at GRASI on V220 northeast bound and V6-8 eastbound.



| CATEGORY     | A      | B           | C                       | D                       |
|--------------|--------|-------------|-------------------------|-------------------------|
| LPV DA       |        | 2044-¾      | 200 (200-¾)             |                         |
| LNAV/VNAV DA |        | 2125-¾      | 281 (300-¾)             |                         |
| LNAV MDA     |        | 2200-¾      | 356 (400-¾)             |                         |
| CIRCLING     | 2300-1 | 453 (500-1) | 2400-1½<br>553 (600-1½) | 2560-2¼<br>713 (800-2¼) |

NC-2, 15 MAY 2025 to 12 JUN 2025

NC-2, 15 MAY 2025 to 12 JUN 2025