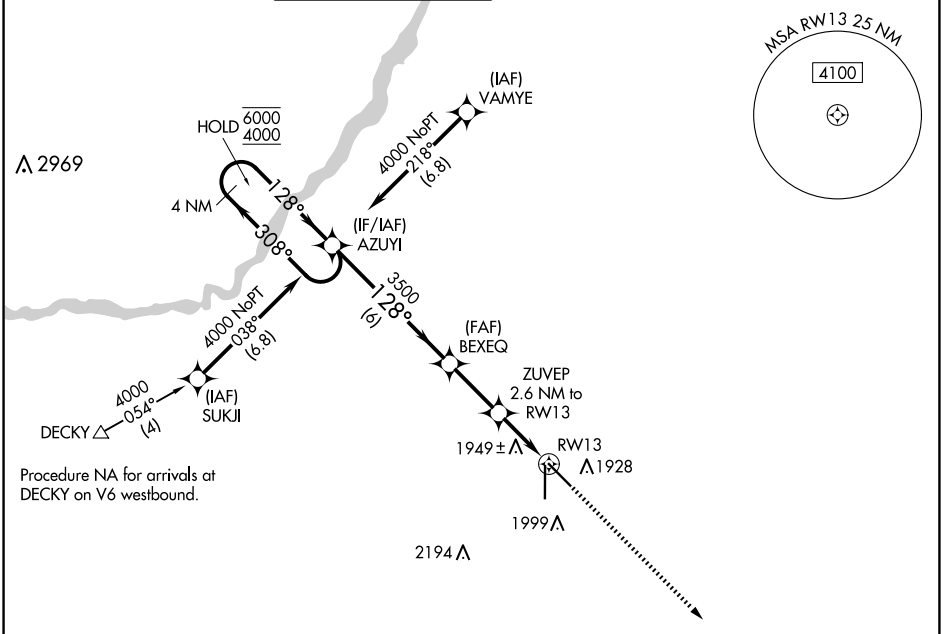


APP CRS	Rwy Idg	<b>6608</b>
<b>128°</b>	TDZE	<b>1842</b>
	Apt Elev	<b>1847</b>

# RNAV (GPS) RWY 13

CENTRAL NEBRASKA RGNL (GRI)

RNP APCH - GPS.				MALS	MISSED APPROACH: Climb to 4100 direct AGEKY and hold.		
ATIS	MINNEAPOLIS CENTER	GRAND ISLAND TOWER *	GND CON	CLNC DEL	CLNC DEL	UNICOM	
<b>127.4</b>	<b>119.4 278.8</b>	<b>118.2 (CTAF) 0 259.3</b>	<b>121.9 259.3</b>	<b>121.9</b>	<b>126.05</b> (when twr closed)	<b>122.95</b>	



NC-2, 15 MAY 2025 to 12 JUN 2025

NC-2, 15 MAY 2025 to 12 JUN 2025

