

WAAS CH <b>81908</b> <b>W15A</b>	APP CRS <b>137°</b>	Rwy ldg <b>4797</b> TDZE <b>3423</b> Apt Elev <b>3425</b>
--	------------------------	---

# RNAV (GPS) RWY 15

GRANT MUNI (GGF)

RNP APCH - GPS.

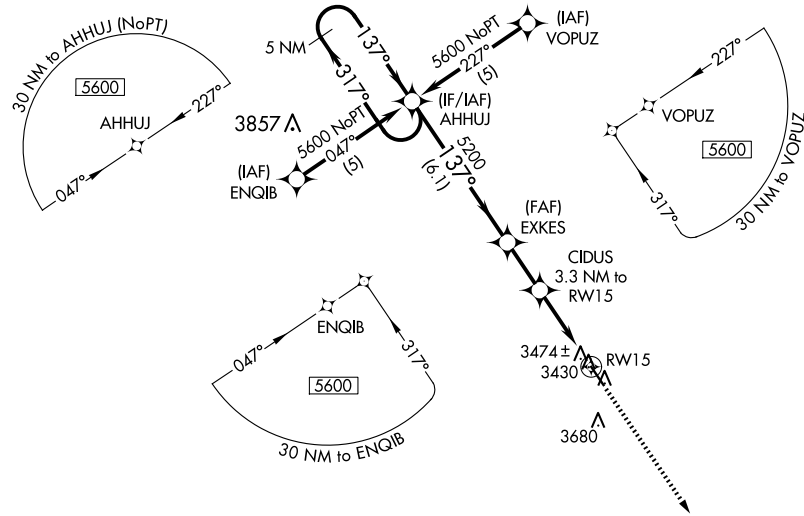
**⚠** For uncompensated Baro-VNAV systems, LNAV/VNAV NA below -21°C or above 54°C. When local altimeter setting not received, use Ogallala altimeter setting and increase LPV DA to 3728 feet; increase LNAV/VNAV DA to 3888 feet and all visibilities ¼ SM; increase all MDAs 60 feet. VDP and Baro-VNAV NA when using Ogallala altimeter setting.

**MISSED APPROACH:**  
Climb to 5600 direct  
AYXOS and hold.

AWOS-3PT  
**118.025**

DENVER CENTER  
**132.7 397.85**

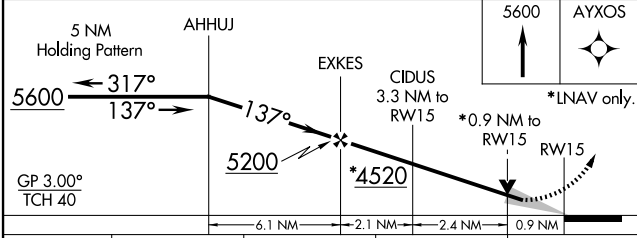
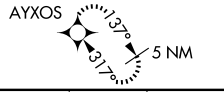
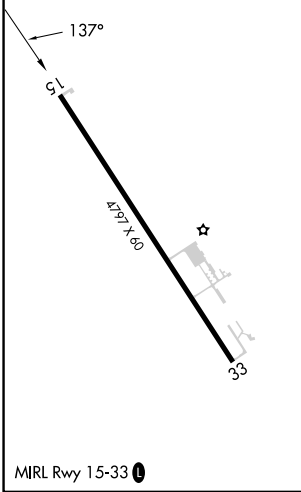
UNICOM  
**122.8 (CTAF)**



NC-2, 15 MAY 2025 to 12 JUN 2025

NC-2, 15 MAY 2025 to 12 JUN 2025

ELEV **3425** TDZE **3423**



CATEGORY	A	B	C	D
LPV DA	3673-1	250 (300-1)		NA
LNAV/VNAV DA	3833-1½	410 (500-1½)		NA
LNAV MDA	3740-1	317 (400-1)		NA
<b>C</b> CIRCLING	3900-1 475 (500-1)	3980-1 555 (600-1)		NA