

VORTAC GCK 113.3 Chan 80	APP CRS 286°	Rwy Idg TDZE Apt Elev 5700 2885 2891
--	------------------------	--

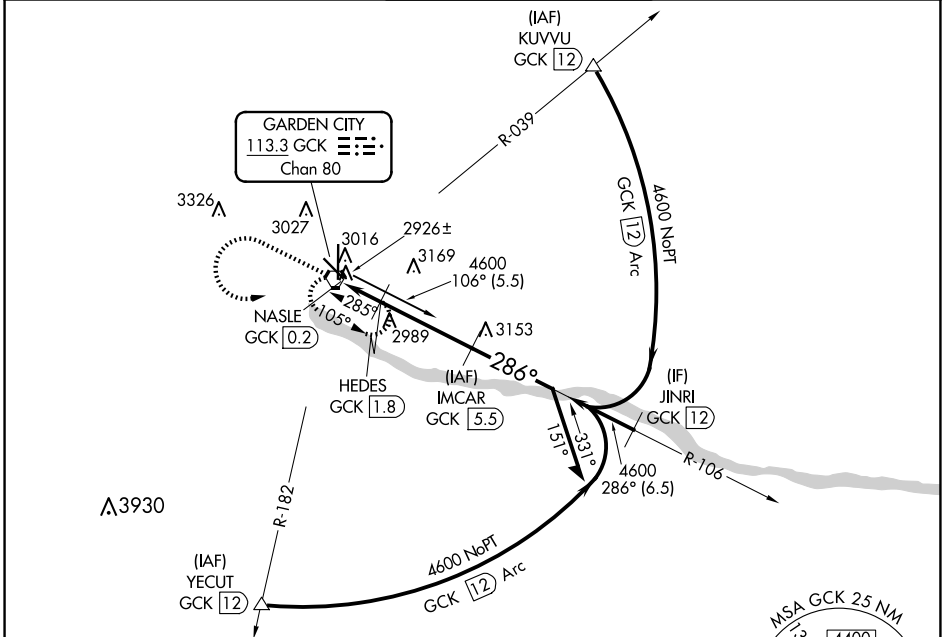
VOR/DME RWY 30

GARDEN CITY RGNL (GCK)

⚠ When local altimeter setting not received, use Dodge City Rgnl altimeter setting and increase all MDA 140 feet and Circling Cat C visibility 1/2 SM and Circling Cat D visibility 1/4 SM.

MISSED APPROACH:
Climb to 4000 then climbing left turn to 4600 direct GCK VORTAC and hold.

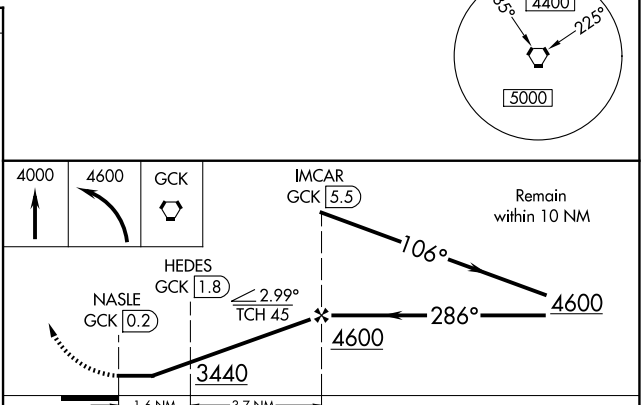
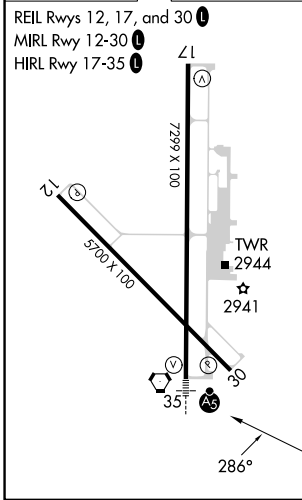
ASOS 121.325	KANSAS CITY CENTER 125.2 285.425	GARDEN CITY TOWER ★ 118.15 (CTAF) 0 254.4	GND CON 119.0 254.4	UNICOM 122.95
------------------------	--	---	-------------------------------	-------------------------



NC-2, 15 MAY 2025 to 12 JUN 2025

NC-2, 15 MAY 2025 to 12 JUN 2025

ELEV 2891	D	TDZE 2885
-----------	----------	-----------



CATEGORY	A	B	C	D
S-30	3240-1 355 (400-1)		3240-1 1/4 355 (400-1 1/4)	
C CIRCLING	3320-1 429 (500-1)	3360-1 469 (500-1)	3480-1 1/2 589 (600-1 1/2)	3480-2 589 (600-2)