

WAAS CH 42834 W21A	APP CRS 215°	Rwy Idg TDZE Apt Elev	7001 1047 1078
---------------------------------	------------------------	-----------------------------	---

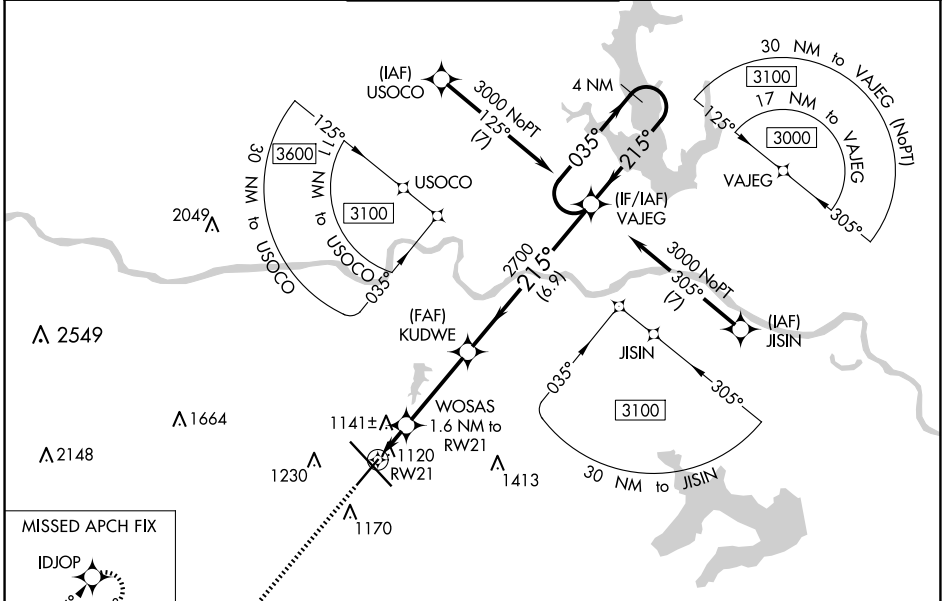
RNAV (GPS) RWY 21

TOPEKA RGNL (F/OE)

⚠ For uncompensated Baro-VNAV systems, LNAV/VNAV NA below -19°C (-2°F) or above 54°C (130°F).
 ⚠ When local altimeter setting not received, use Philip Billard Muni altimeter setting and increase all DA 45 feet and all MDA 60 feet, increase LPV and LNAV/VNAV all Cats visibility to 1 mile and increase LNAV Cat C/D visibility and Circling Cat D visibility ½ mile. DME/DME RNP-0.3 NA. VDP and Baro-VNAV NA when using Philip Billard Muni altimeter setting. Helicopter visibility reduction below ¾ SM NA.

MISSED APPROACH: Climb to 3000 direct IDJOP and hold.

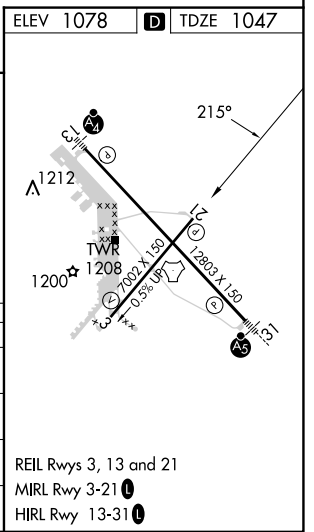
ATIS 128.25	KANSAS CITY CENTER 123.8 343.7	FORBES TOWER* 120.8 (CTAF) 340.2	GND CON 118.425 275.8	UNICOM 122.95
-----------------------	--	--	---------------------------------	-------------------------



NC-2, 15 MAY 2025 to 12 JUN 2025

NC-2, 15 MAY 2025 to 12 JUN 2025

ELEV 1078	D TDZE 1047
3000 IDJOP	VAJEG 4 NM Holding Pattern
*LNAV only.	WOSAS 1.6 NM to RW21
*1.1 NM to RW21	KUDWE 2700
1600*	2700
GP 3.00°	035° → 3000
TCH 51	← 215°
1.1 NM 0.5 3.4 NM 6.9 NM	
CATEGORY	A B C D
LPV DA	1311-1 264 (300-1)
LNAV/VNAV DA	1297-¾ 250 (300-¾)
LNAV MDA	1440-1 393 (400-1) 1440-1½ 393 (400-1½)
CIRCLING	1520-1 442 (500-1) 1580-1 502 (600-1) 1580-1½ 502 (600-1½) 1700-2 622 (700-2)



REIL Rwy 3, 13 and 21
 MIRL Rwy 3-21
 HIRL Rwy 13-31