

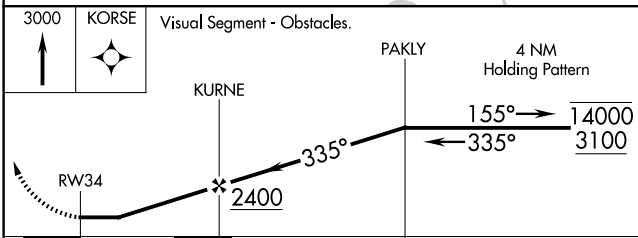
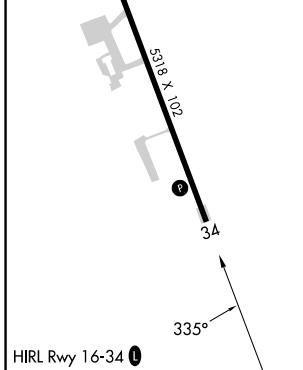
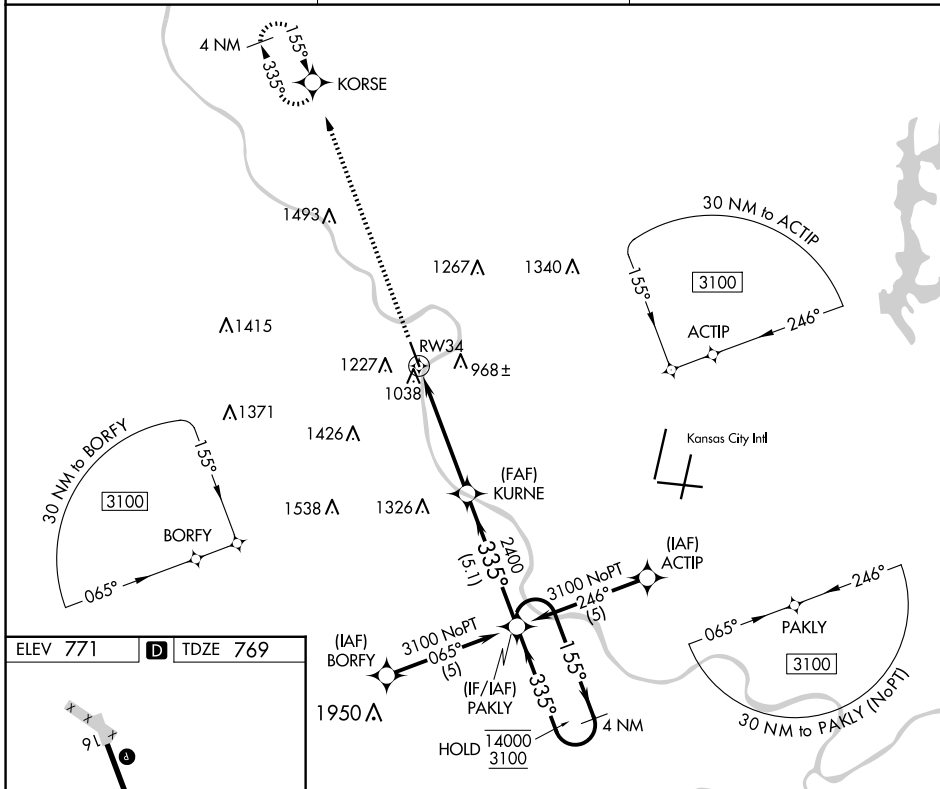
APP CRS	Rwy Idg	5318
335°	TDZE	769
	Apt Elev	771

RNAV (GPS) RWY 34

SHERMAN AAF (FLV)

RNP APCH - GPS.	MISSED APPROACH: Climb to 3000 direct KORSE and hold.
<p>▼ Circling NA west of Rwy 16-34. Procedure NA at night. Rwy 34 helicopter visibility reduction below 1 SM NA. Use Kansas City Intl altimeter setting.</p> <p>▲ NA</p>	

MCI ASOS 128.375	KANSAS CITY APP CON 124.7 284.7	CTAF 126.2
----------------------------	---	----------------------



CATEGORY	A	B	C	D
LNAV MDA	1560-1 791 (800-1)	1560-1¼ 791 (800-1¼)	1560-2½ 791 (800-2½)	NA
C CIRCLING	1560-1 789 (800-1)	1560-1¼ 789 (800-1¼)	1560-2½ 789 (800-2½)	NA

NC-2, 15 MAY 2025 to 12 JUN 2025

NC-2, 15 MAY 2025 to 12 JUN 2025