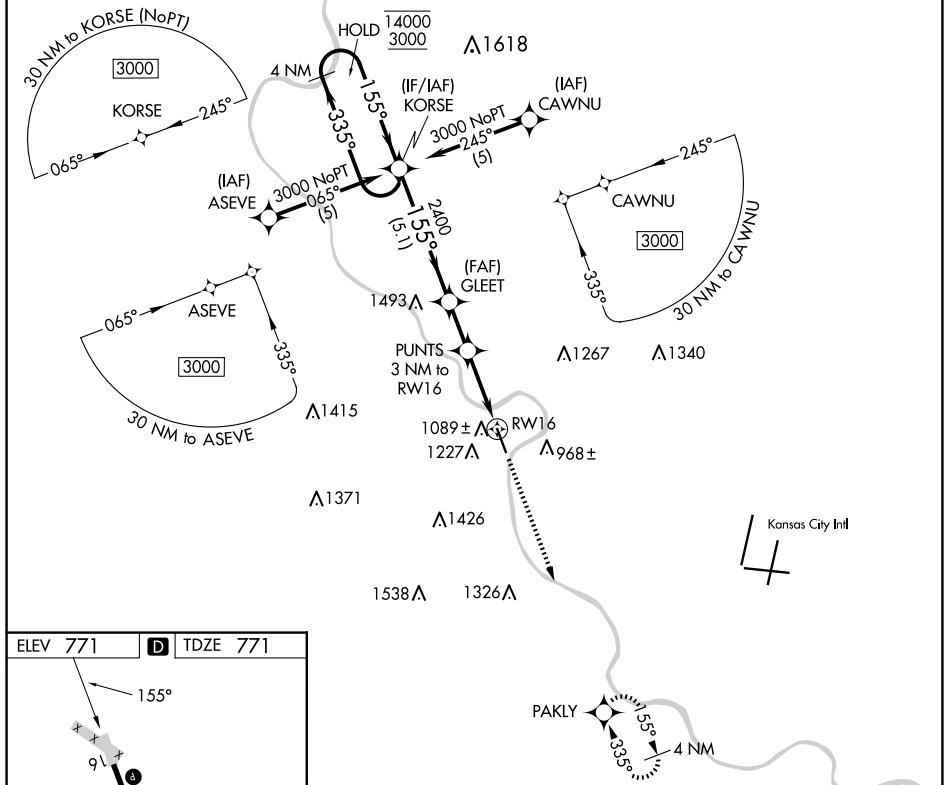


APP CRS	Rwy Idg	5318
155°	TDZE	771
	Apt Elev	771

RNAV (GPS) RWY 16

SHERMAN AAF (FLV)

RNP APCH - GPS.	MISSED APPROACH: Climb to 3100 direct PAKLY and hold.	
<p>⚠ Circling NA west of Rwy 16-34. Procedure NA at night. Rwy 16 helicopter visibility reduction below 1 SM NA. Use Kansas City Intl altimeter setting.</p>		
MCI ASOS 128.375	KANSAS CITY APP CON 124.7 284.7	CTAF 126.20



NC-2, 15 MAY 2025 to 12 JUN 2025

NC-2, 15 MAY 2025 to 12 JUN 2025

ELEV 771	D	TDZE 771
----------	----------	----------

HIRL Rwy 16-34 **Ⓛ**

4 NM Holding Pattern KORSE

VGSI and descent angles not coincident (VGSI Angle 3.00/TCH 40).

3100	PAKLY
------	-------

CATEGORY	A	B	C	D
LNAV MDA	1520-1 749 (800-1)	1520-1¼ 749 (800-1¼)	1520-2 749 (800-2)	NA
C CIRCLING	1520-1 749 (800-1)	1520-1¼ 749 (800-1¼)	1520-2¼ 749 (800-2¼)	NA