

|  |                        |   |
|--|------------------------|---|
| WAAS<br>CH <b>77635</b><br><b>W32A</b> | APP CRS<br><b>318°</b> | Rwy Idg <b>4650</b><br>TDZE <b>1204</b><br>Apt Elev <b>1204</b> |
|--|------------------------|---|

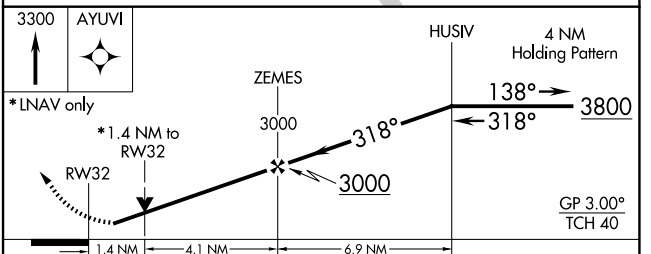
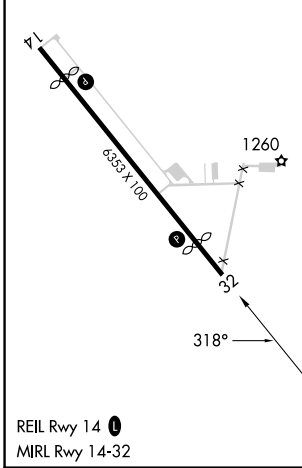
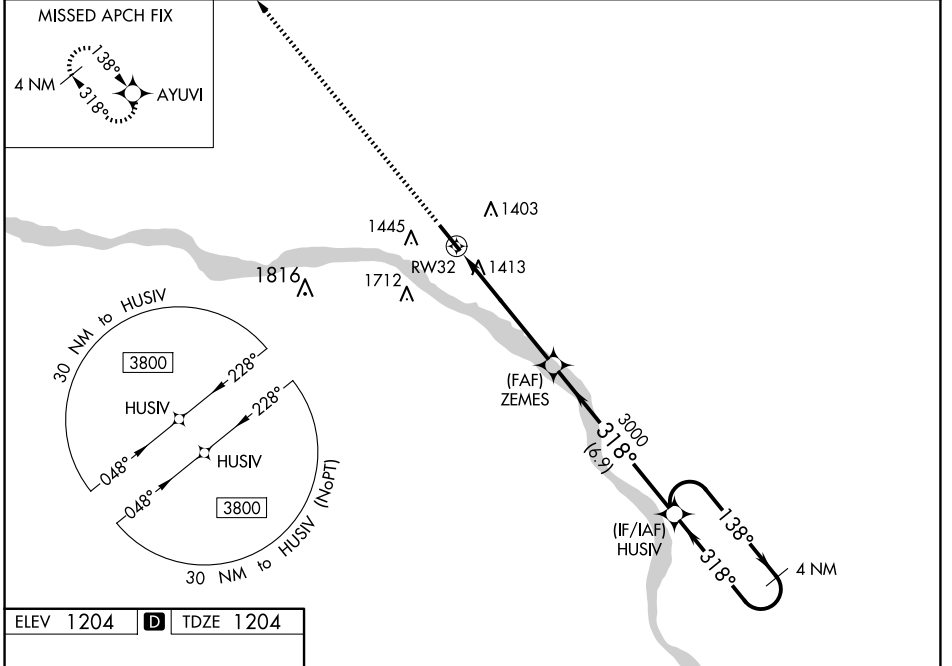
# RNAV (GPS) RWY 32

FREMONT MUNI (F'E/T)

**▼** For uncompensated Baro-VNAV systems, LNAV/VNAV NA below -17°C (2°F) or above 54°C (130°F).  
**▲** DME/DME RNP-0.3 NA. Helicopter visibility reduction below 1 SM NA. When local altimeter setting not received, use Blair altimeter setting and increase all DA/MDA 60 feet; increase LNAV Cat C visibility ½ mile, and LNAV/VNAV visibility ¼ mile all Cats. Baro-VNAV and VDP NA when using Blair altimeter setting.

**MISSED APPROACH:** Climb to 3300 direct AYUVI and hold.

|                          |  |                                 |
|--------------------------|--|---------------------------------|
| AWOS-3<br><b>121.275</b> | OMAHA APP CON<br><b>135.875 354.05</b> | UNICOM<br><b>122.8 (CTAF) ①</b> |
|--------------------------|--|---------------------------------|



| CATEGORY          | A                    | B           | C                       | D  |
|-------------------|----------------------|-------------|-------------------------|----|
| LPV DA            | 1456-1 252 (300-1)   |             |                         | NA |
| LNAV/VNAV DA      | 1712-1¾ 508 (600-1¾) |             |                         | NA |
| LNAV MDA          | 1680-1               | 476 (500-1) | 1680-1⅜<br>476 (500-1⅜) | NA |
| <b>C</b> CIRCLING | 1760-1               | 556 (600-1) | 2020-2½<br>816 (900-2½) | NA |

NC-2, 15 MAY 2025 to 12 JUN 2025

NC-2, 15 MAY 2025 to 12 JUN 2025