

WAAS CH <b>56229</b> <b>W35A</b>	APP CRS <b>354°</b>	Rwy Idg <b>7003</b> TDZE <b>1528</b> Apt Elev <b>1533</b>
----------------------------------------	------------------------	-----------------------------------------------------------------

# RNAV (GPS) RWY 35

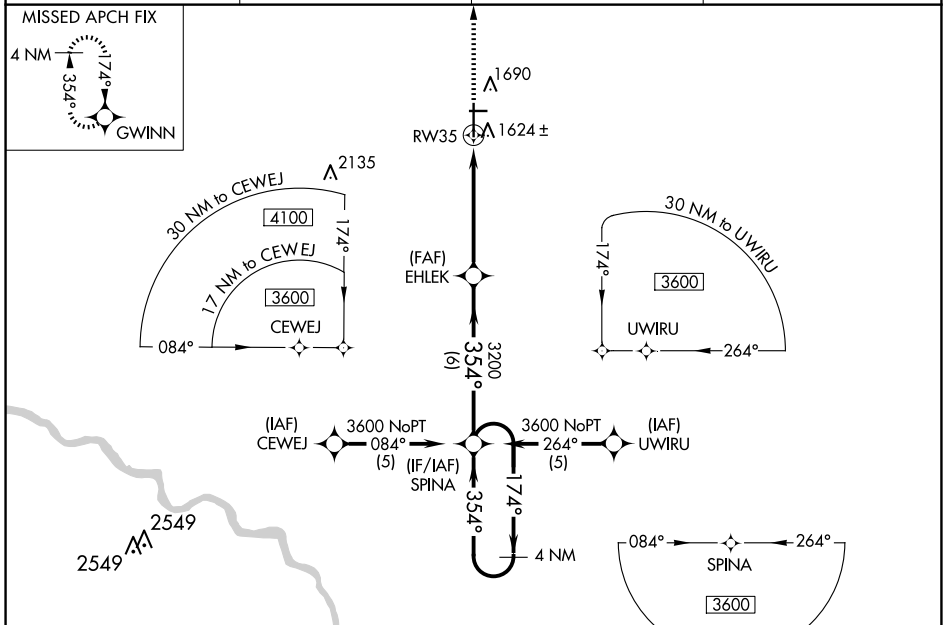
NEWTON-CITY-COUNTY (E WK)

RNP APCH

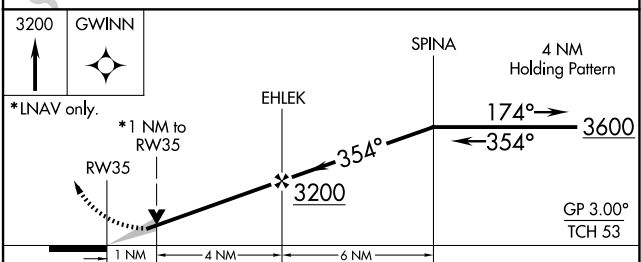
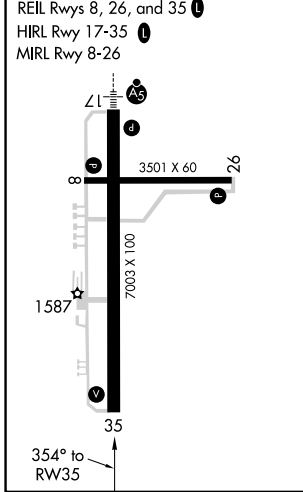
When local altimeter setting not received, use Wichita Dwight D Eisenhower Ntl altimeter setting: increase LPV DA to 1878 feet and visibility ¼ SM; increase all MDAs 100 feet and visibility LNAV Cat C ¾ SM and LNAV Cat D ½ SM. VDP NA when using Wichita Dwight D Eisenhower Ntl altimeter setting. Circling Rwy 8, 26 NA at night.

MISSED APPROACH: Climb to 3200 direct GWINN and hold.

AWOS-3PT <b>123.875</b>	WICHITA APP CON <b>125.5 306.2</b>	CLNC DEL <b>126.55</b>	UNICOM <b>123.0 (CTAF)</b>
----------------------------	---------------------------------------	---------------------------	-------------------------------



ELEV 1533	<b>D</b>	TDZE 1528
-----------	----------	-----------



CATEGORY	A	B	C	D
LPV DA	1778-¾ 250 (300-¾)			
LNAV/VNAV DA	NA			
LNAV MDA	1880-1 352 (400-1)			1880-1½ 352 (400-1½)
CIRCLING	2000-1 467 (500-1)		2000-1½ 467 (500-1½)	
			2100-2 567 (600-2)	

NC-2, 15 MAY 2025 to 12 JUN 2025

NC-2, 15 MAY 2025 to 12 JUN 2025